

1.For Blind Holes.

2.Materials where chips come out continuously in coil shape.

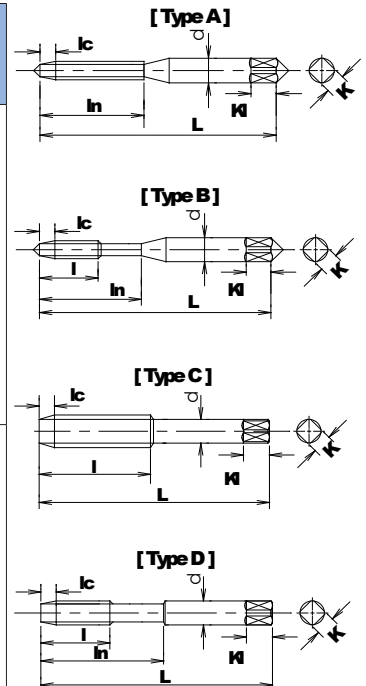
(Chamfer length : 2.5pitches / Type of flute : 35° Right spiral flute.

/ Materials : HSSE. / Surface : OX).



HTD ดอกตลับเกลียวสว่าน สีดำ SFT - OX

รหัสสินค้า	SIZE		L	l	ln	d	K	Kl	Type	SFT		บรรจุ	อัน / บาท
	Dia	Pitch								F	HL		
HT - 0101005	M2	x 0.4	40	15	-	3.0	2.5	5	A	2	1	10	480
HT - 0101007	M2.3	x 0.4	42	15	-	3.0	2.5	5	A	2	1	10	480
HT - 0101009	M2.5	x 0.45	44	16	-	3.0	2.5	5	A	2	1	10	400
HT - 0101012	M2.6	x 0.45	44	16	-	3.0	2.5	5	A	2	1	10	390
HT - 0101014	M3	x 0.5	46	11	19	4.0	3.2	6	B	3	2	10	260
HT - 0101016	M3.5	x 0.6	48	13	20	4.0	3.2	6	B	3	1	10	360
HT - 0101018	M4	x 0.7	52	13	21	5.0	4.0	7	B	3	2	10	260
HT - 0101020	M5	x 0.8	60	16	24	5.5	4.5	7	B	3	2	10	264
HT - 0101022	M6	x 0.75	62	20	-	6.0	4.5	7	A	3	2	10	320
HT - 0101024	M6	x 1.0	62	19	29	6.0	4.5	7	B	3	2	10	280
HT - 0101026	M7	x 0.75	62	20	-	6.2	5.0	8	C	3	2	10	460
HT - 0101028	M7	x 1.0	65	26	-	6.2	5.0	8	C	3	2	10	420
HT - 0101030	M8	x 0.75	62	20	-	6.2	5.0	8	C	3	2	10	440
HT - 0101032	M8	x 1.0	70	30	-	6.2	5.0	8	C	3	2	10	420
HT - 0101034	M8	x 1.25	70	22	37	6.2	5.0	8	D	3	2	10	380
HT - 0101036	M10	x 1.0	70	30	-	7.0	5.5	8	C	3	2	10	580
HT - 0101038	M10	x 1.25	75	32	-	7.0	5.5	8	C	3	2	10	520
HT - 0101040	M10	x 1.5	75	24	41	7.0	5.5	8	D	3	2	10	500
HT - 0101042	M12	x 1.0	70	30	-	8.5	6.5	9	C	3	2	3	760
HT - 0101044	M12	x 1.25	80	38	-	8.5	6.5	9	C	3	2	3	660
HT - 0101046	M12	x 1.5	82	38	-	8.5	6.5	9	C	3	2	3	660
HT - 0101048	M12	x 1.75	82	29	48	8.5	6.5	9	D	3	2	3	660
HT - 0101052	M14	x 1.0	70	30	-	10.5	8.0	11	C	3	2	3	1,040
HT - 0101054	M14	x 1.25	88	38	-	10.5	8.0	11	C	3	2	3	980
HT - 0101056	M14	x 1.5	88	42	-	10.5	8.0	11	C	3	2	3	940
HT - 0101058	M14	x 2.0	88	30	48	10.5	8.0	11	D	3	2	3	940
HT - 0101062	M16	x 1.0	75	35	-	12.5	10.0	13	C	3	2	3	1,400
HT - 0101064	M16	x 1.5	95	45	-	12.5	10.0	13	C	3	2	3	1,180
HT - 0101066	M16	x 2.0	95	32	52	12.5	10.0	13	D	3	2	3	1,180
HT - 0101070	M18	x 1.0	80	30	-	14.0	11.0	14	C	4	2	3	1,600
HT - 0101072	M18	x 1.5	95	45	-	14.0	11.0	14	C	4	2	3	1,400
HT - 0101074	M18	x 2.0	95	45	-	14.0	11.0	14	C	4	3	3	1,500
HT - 0101076	M18	x 2.5	100	37	55	14.0	11.0	14	D	4	3	3	1,400
HT - 0101080	M20	x 1.0	80	30	-	15.0	12.0	15	C	4	2	3	2,000
HT - 0101082	M20	x 1.5	95	45	-	15.0	12.0	15	C	4	2	3	1,550
HT - 0101084	M20	x 2.0	95	45	-	15.0	12.0	15	C	4	3	3	1,700
HT - 0101086	M20	x 2.5	105	37	58	15.0	12.0	15	D	4	3	3	1,550
HT - 0101090	M22	x 1.5	95	45	-	17.0	13.0	16	C	4	2	3	2,100
HT - 0101092	M22	x 2.0	95	45	-	17.0	13.0	16	C	4	3	3	2,200
HT - 0101094	M22	x 2.5	115	38	63	17.0	13.0	16	D	4	3	3	2,100
HT - 0101098	M24	x 1.5	95	45	-	19.0	15.0	18	C	4	2	1	2,700
HT - 0101100	M24	x 3.0	120	45	66	19.0	15.0	18	D	4	3	1	2,700
HT - 0101104	M26	x 1.5	95	45	-	20.0	15.0	18	C	4	2	1	4,200
HT - 0101106	M26	x 3.0	130	62	-	20.0	15.0	18	C	4	3	1	4,000
HT - 0101110	M27	x 1.5	95	45	-	20.0	15.0	18	C	4	2	1	5,000
HT - 0101112	M27	x 3.0	130	45	71	20.0	15.0	18	D	4	3	1	4,700
HT - 0101116	M30	x 1.5	105	45	-	23.0	17.0	20	C	4	2	1	6,400
HT - 0101118	M30	x 3.5	135	48	74	23.0	17.0	20	D	4	3	1	6,000
HT - 0101124	M33	x 3.5	145	51	77	25.0	19.0	22	D	4	JIS2	1	10,000
HT - 0101130	M36	x 4.0	155	57	82	28.0	21.0	24	D	4	JIS2	1	11,000
HT - 0101102	M25	x 2.5	95	45	-	19.0	15.0	18	C	4	3	1	4,200



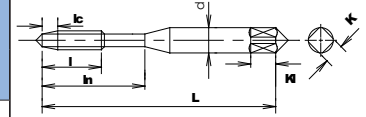
F : จำนวนฟัน (Number of flutes)
HL : Hayasaka original thread limit



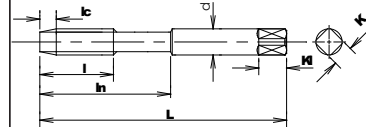
HTD ดอกตลับเกลียวส่วน สีดำ SFT - OX

รหัสสินค้า	SIZE		L	l	ln	d	K	Kl	Type	SFT		อัน / บาท
	Dia	Pitch								F	HL	
HT - 0101302	M3	x 0.5	46	11	19	4.0	3.2	6	B	3	3	280
HT - 0101304	M4	x 0.7	52	13	21	5.0	4.0	7	B	3	3	280
HT - 0101306	M5	x 0.8	60	16	24	5.5	4.5	7	B	3	3	280
HT - 0101308	M6	x 1.0	62	19	29	6.0	4.5	7	B	3	3	300
HT - 0101310	M8	x 1.25	70	22	37	6.2	5.0	8	D	3	3	400
HT - 0101314	M10	x 1.5	75	24	41	7.0	5.5	8	D	3	3	530
HT - 0101320	M12	x 1.75	82	29	48	8.5	6.5	9	D	3	3	700
HT - 0101330	M14	x 2.0	88	30	48	10.5	8.0	11	D	3	3	1,000
HT - 0101340	M16	x 2.0	95	32	52	12.5	10.0	13	D	3	3	1,250

HT - 0101402	M3	x 0.5	46	11	19	4.0	3.2	6	B	3	4	280
HT - 0101404	M4	x 0.7	52	13	21	5.0	4.0	7	B	3	4	280
HT - 0101406	M5	x 0.8	60	16	24	5.5	4.5	7	B	3	4	280
HT - 0101408	M6	x 1.0	62	19	29	6.0	4.5	7	B	3	4	300
HT - 0101410	M8	x 1.25	70	22	37	6.2	5.0	8	D	3	4	400
HT - 0101414	M10	x 1.5	75	24	41	7.0	5.5	8	D	3	4	530
HT - 0101420	M12	x 1.75	82	29	48	8.5	6.5	9	D	3	4	700
HT - 0101430	M14	x 2.0	88	30	48	10.5	8.0	11	D	3	4	1,000
HT - 0101440	M16	x 2.0	95	32	52	12.5	10.0	13	D	3	4	1,250



TYPE B



TYPE D

F : จำนวนฟัน (Number of flutes)

HL : Hayasaka original thread limit

HTD ดอกตลับเกลียวส่วน สีดำ SFT - OX BSW

รหัสสินค้า	SIZE			L	l	d	K	Kl	SFT		บรรจุ	อัน / บาท
									F	Z		
HT - 0102001	BSW	1/8	- 40	49	16.0	3.3	2.7	4.5	3	3	10	290
HT - 0102002	BSW	5/32	- 32	54	19.0	4.0	3.1	6.5	3	3	10	290
HT - 0102003	BSW	3/16	- 24	61	22.0	4.8	3.8	6.5	3	3	10	290
HT - 0102004	BSW	1/4	- 20	64	25.0	6.4	5.0	7.0	3	3	10	310
HT - 0102006	BSW	5/16	- 18	70	28.0	8.0	6.1	10.3	3	3	10	410
HT - 0102008	BSW	3/8	- 16	75	32.0	9.5	7.5	10.3	3	3	10	480
HT - 0102010	BSW	7/16	- 14	80	36.5	8.2	6.1	10.5	3	3	3	680
HT - 0102012	BSW	1/2	- 12	86	42.0	9.3	7.0	11.0	3	3	3	800
HT - 0102014	BSW	9/16	- 12	91	42.0	10.9	8.2	12.7	3	3	3	1,270
HT - 0102016	BSW	5/8	- 11	97	46.0	12.2	9.1	14.0	3	3	3	1,300
HT - 0102018	BSW	3/4	- 10	108	51.0	15.0	11.2	17.5	4	3	3	1,800
HT - 0102020	BSW	7/8	- 9	119	56.5	17.7	13.3	19.0	4	3	3	2,350
HT - 0102022	BSW	1"	- 8	130	63.5	20.3	15.2	20.5	4	3	1	3,140

Fig-J1 : ~1/4

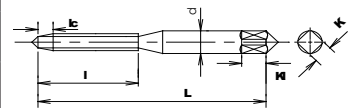
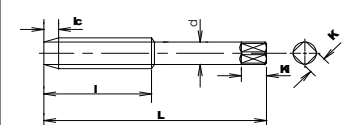


Fig-J1 : 5/16 ~



F : จำนวนฟัน (Number of flutes)

Z : Zone

HTD ดอกตลับเกลียวส่วน สีดำ SFT - OX UNF

รหัสสินค้า	SIZE			L	l	d	K	Kl	SFT		บรรจุ	อัน / บาท
									F	JC		
HT - 0103004	UNF	1/4	- 28	62	24	6.0	4.5	7.0	3	2	10	370
HT - 0103006	UNF	5/16	- 24	70	30	6.1	5.0	8.0	3	2	10	420
HT - 0103008	UNF	3/8	- 24	75	35	7.0	5.5	8.0	3	2	10	540
HT - 0103010	UNF	7/16	- 20	80	38	8.0	6	9.0	3	2	3	740
HT - 0103012	UNF	1/2	- 20	85	42	9.0	7	10.0	3	2	3	900
HT - 0103014	UNF	9/16	- 18	90	42	10.5	8	11.0	3	2	3	1,340
HT - 0103016	UNF	5/8	- 18	95	45	12.0	9	12.0	3	2	3	1,340
HT - 0103018	UNF	3/4	- 16	105	50	14.0	11	14.0	4	2	3	1,900
HT - 0103020	UNF	7/8	- 14	115	55	17.0	13	16.0	4	2	3	2,700
HT - 0103022	UNF	1"	- 12	125	60	20.0	15	18.0	4	2	1	3,600

Fig-J2 : ~1/4

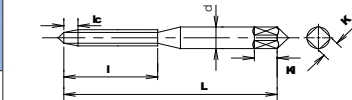
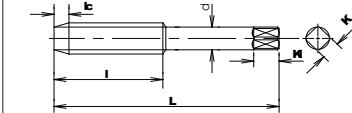


Fig-J2 : 5/16~



F : จำนวนฟัน (Number of flutes)

JC : JIS class of the thread limit



HTD ดอกตลับเกลียวสว่าน สีดำ SFT - OX UNF

รหัสสินค้า	SIZE	L	l	d	K	KI	SFT		อื่น / บาท
							F	JC	
HT - 0103040	UNF No.2 - 64	42	15	3.0	2.5	5.0	2	2	550
HT - 0103041	UNF No.3 - 56	44	16	3.0	2.5	5.0			380
HT - 0103042	UNF No.4 - 48	44	16	3.0	2.5	5.0	3	2	360
HT - 0103043	UNF No.5 - 44	46	18	4.0	3.2	6.0	3	2	350
HT - 0103044	UNF No.6 - 40	48	18	4.0	3.2	6.0	3	2	340
HT - 0103045	UNF No.8 - 36	52	20	5.0	4	7.0	3	2	340
HT - 0103046	UNF No.10 - 32	60	22	5.5	4.5	7.0	3	2	340
HT - 0103047	UNF No.12 - 28	60	22	5.5	4.5	7.0	3	2	350

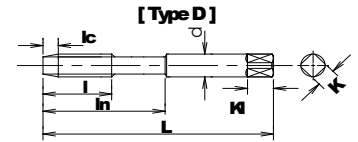
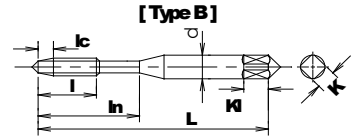
HTD ดอกตลับเกลียวสว่าน สีดำ SFT - OX UNC

รหัสสินค้า	SIZE	L	l	d	K	KI	SFT		อื่น / บาท
							F	JC	
HT - 0104040	UNC No.2 - 56	42	15	3.0	2.5	5.0	2	2	550
HT - 0104041	UNC No.3 - 48	44	16	3.0	2.5	5.0			380
HT - 0104042	UNC No.4 - 40	44	16	3.0	2.5	5.0	3	2	360
HT - 0104043	UNC No.5 - 40	46	18	4.0	3.2	6.0	3	2	350
HT - 0104044	UNC No.6 - 32	48	18	4.0	3.2	6.0	3	2	340
HT - 0104045	UNC No.8 - 32	52	20	5.0	4	7.0	3	2	340
HT - 0104046	UNC No.10 - 24	60	22	5.5	4.5	7.0	3	2	340
HT - 0104047	UNC No.12 - 24	60	22	5.5	4.5	7.0	3	2	350
HT - 0104004	UNC 1/4 - 20	62	24	6.0	4.5	7.0	3	2	370
HT - 0104006	UNC 5/16 - 18	70	30	6.1	5.0	8.0	3	2	420
HT - 0104008	UNC 3/8 - 16	75	35	7.0	5.5	8.0	3	2	540
HT - 0103010	UNC 7/16 - 14	80	38	8.0	6	9.0	3	2	740
HT - 0104012	UNC 1/2 - 13	85	42	9.0	7	10.0	3	2	900
HT - 0104014	UNC 9/16 - 12	90	42	10.5	8	11.0	3	2	1,340
HT - 0104016	UNC 5/8 - 11	95	45	12.0	9	12.0	3	2	1,340
HT - 0104018	UNC 3/4 - 10	105	50	14.0	11	14.0	4	2	1,900
HT - 0104020	UNC 7/8 - 9	115	55	17.0	13	16.0	4	2	2,700
HT - 0104022	UNC 1" - 8	125	60	20.0	15	18.0	4	2	3,600



HTD ดอกตลับเกลียวสว่าน สีดำ SUS - OX

รหัสสินค้า	SIZE		L	l	ln	d	K	Kl	Type	Flute	HL	อัน / บาท
	Dia	Pitch										
HT - 0105014	M3	x 0.5	46	11	19	4.0	3.2	6	B	3	2	310
HT - 0105018	M4	x 0.7	52	13	21	5.0	4.0	7	B	3	2	300
HT - 0105020	M5	x 0.8	60	16	24	5.5	4.5	7	B	3	2	310
HT - 0105024	M6	x 1.0	62	19	29	6.0	4.5	7	B	3	2	330
HT - 0105034	M8	x 1.25	70	22	37	6.2	5.0	8	D	3	3	420
HT - 0105038	M10	x 1.25	75	24	41	7.0	5.5	8	D	3	3	560
HT - 0105040	M10	x 1.5	75	24	41	7.0	5.5	8	D	3	3	560
HT - 0105046	M12	x 1.5	82	29	48	8.5	6.5	9	D	3	3	740
HT - 0105048	M12	x 1.75	82	29	48	8.5	6.5	9	D	3	3	740
HT - 0105058	M14	x 2.0	88	30	48	10.5	8.0	11	D	3	3	980
HT - 0105066	M16	x 2.0	95	32	52	12.5	10.0	13	D	3	3	1,200



HTD ดอกตลับเกลียวสว่าน (สแตนเลส) สีดำ SFT SUS - OX

รหัสสินค้า	SIZE			L	l	d	K	Kl	SFT - SUS		อัน / บาท
									F	Z	
HT - 0106001	BSW	1/8	- 40	49	16.0	3.3	2.7	4.5	3	3	360
HT - 0106002	BSW	5/32	- 32	54	19.0	4.0	3.1	6.5	3	3	350
HT - 0106003	BSW	3/16	- 24	61	22.0	4.8	3.8	6.5	3	3	350
HT - 0106004	BSW	1/4	- 20	64	25.0	6.4	5.0	7.0	3	3	370
HT - 0106006	BSW	5/16	- 18	70	28.0	8.0	6.1	10.3	3	3	420
HT - 0106008	BSW	3/8	- 16	75	32.0	9.5	7.5	10.3	3	3	480
HT - 0106010	BSW	7/16	- 14	80	36.5	8.2	6.1	10.5	3	3	740
HT - 0106012	BSW	1/2	- 12	86	42.0	9.3	7.0	11.0	3	3	880
HT - 0106014	BSW	9/16	- 12	91	42.0	10.9	8.2	12.7	3	3	1,340
HT - 0106016	BSW	5/8	- 11	97	46.0	12.2	9.1	14.0	3	3	1,400
HT - 0106018	BSW	3/4	- 10	108	51.0	15.0	11.2	17.5	4	3	2,000
HT - 0106020	BSW	7/8	- 9	119	56.5	17.7	13.3	19.0	4	3	2,600
HT - 0106022	BSW	1"	- 8	130	63.5	20.3	15.2	20.5	4	3	3,500

Suitable for tapping blind holes where damage is caused by chip packing as well as in case where internal thread bites work material without difficulty.

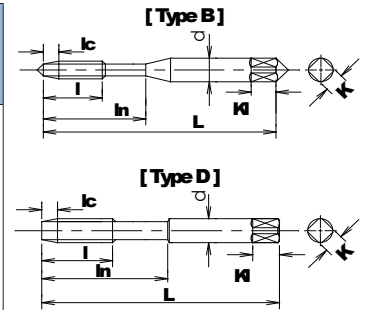
(Chamfer length: 2.5 pitches./ Type of flute: 35° Right spiral flute./

Materials: HSSE. / Surface: Hard Chromium.)



HTD ดอกตลับเกลียวสว่าน สีดำ รูลึก DH - SFT - OX

รหัสสินค้า	SIZE		L	l	ln	d	K	Kl	Type	Flute	HL	อัน / บาท
	Dia	Pitch										
HT - 0107014	M3	x 0.5	46	5	19	4.0	3.2	6	B	3	2	320
HT - 0107016	M3.5	x 0.6	48	6	20	4.0	3.2	6	B	3	2	350
HT - 0107018	M4	x 0.7	52	7	21	5.0	4.0	7	B	3	2	310
HT - 0107020	M5	x 0.8	60	8	24	5.5	4.5	7	B	3	2	330
HT - 0107024	M6	x 1.0	62	10	29	6.0	4.5	7	B	3	2	340
HT - 0107028	M7	x 1.0	65	-	-	6.2	5.0	8	C	3	2	430
HT - 0107034	M8	x 1.25	70	13	37	6.2	5.0	8	D	3	2	420
HT - 0107040	M10	x 1.5	75	15	41	7.0	5.5	8	D	3	2	600
HT - 0107048	M12	x 1.75	82	18	48	8.5	6.5	9	D	3	2	780
HT - 0107058	M14	x 2.0	88	20	48	10.5	8.0	11	D	3	2	1,000
HT - 0107066	M16	x 2.0	95	20	52	12.5	10.0	13	D	3	2	1,280
HT - 0107076	M18	x 2.5	100	25	55	14.0	11.0	14	D	4	3	1,600
HT - 0107086	M20	x 2.5	105	25	58	15.0	12.0	15	D	4	3	1,900



HTD ดอกตลับเกลียวสว่าน สีดำ ทั้งตัว SFT - BK

รหัสสินค้า	SIZE		L	l	d	K	Kl	J-SFT		อัน / บาท
	Dia	Pitch						F	JC	
HT-0130002	W 1/8	- 40	46	18.0	4.0	3.2	6.0	3	2	270
HT-0130004	W 5/32	- 32	52	20.0	5.0	4.0	7.0	3	2	270
HT-0130006	W 3/16	- 24	60	22.0	5.5	4.5	7.0	3	2	270
HT-0130008	W 1/4	- 20	62	24.0	6.0	4.5	7.0	3	2	300
HT-0130010	W 5/16	- 18	70	30.0	6.1	5.0	8.0	3	2	380
HT-0130012	W 3/8	- 16	75	35.0	7.0	5.5	8.0	3	2	440
HT-0130014	W 7/16	- 14	80	38.0	8.0	6.0	9.0	3	2	620
HT-0130016	W 1/2	- 12	85	42.0	9.0	7.0	10.0	3	2	720
HT-0130017	W 9/16	- 12	90	42.0	10.5	8.0	11.0	3	2	1,150
HT-0130018	W 5/8	- 11	95	45.0	12.0	9.0	12.0	3	2	1,180
HT-0130020	W 3/4	- 10	105	50.0	14.0	11	14.0	4	2	1,650
HT-0130022	W 7/8	- 9	115	55.0	17.0	13	16.0	4	2	2,150
HT-0130024	W 1"	- 8	125	60.0	20.0	15	18.0	4	2	2,850

Fig-J1 : ~1/4

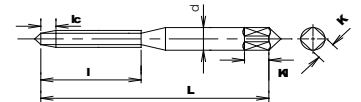
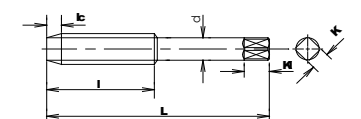


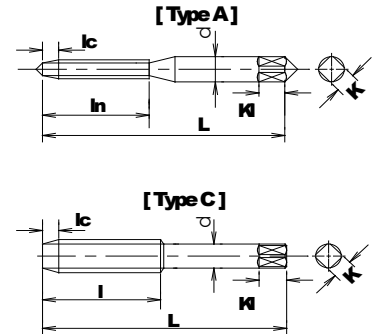
Fig-J2 : 5/16 ~





HTD ดอกตลับเกลียวสว่าน สีดำ SFT - OX ยาว 100 mm.

รหัสสินค้า	SIZE		L	l	d	K	Kl	Type	Flute	HL	อัน / บาท
	Dia	Pitch									
HT - 0108014	M3	x 0.5	100	18	4.0	3.2	6	A	3	2	860
HT - 0108018	M4	x 0.7	100	20	5.0	4.0	7	A	3	2	780
HT - 0108020	M5	x 0.8	100	22	5.5	4.5	7	A	3	2	680
HT - 0108024	M6	x 1.0	100	24	6.0	4.5	7	A	3	2	580
HT - 0108034	M8	x 1.25	100	30	6.2	5.0	8	C	3	2	710
HT - 0108038	M10	x 1.25	100	32	7.0	5.5	8	C	3	2	860
HT - 0108040	M10	x 1.5	100	32	7.0	5.5	8	C	3	2	860
HT - 0108044	M12	x 1.25	100	38	8.5	6.5	9	C	3	2	1,200
HT - 0108046	M12	x 1.5	100	38	8.5	6.5	9	C	3	2	1,200
HT - 0108048	M12	x 1.75	100	38	8.5	6.5	9	C	3	2	1,200

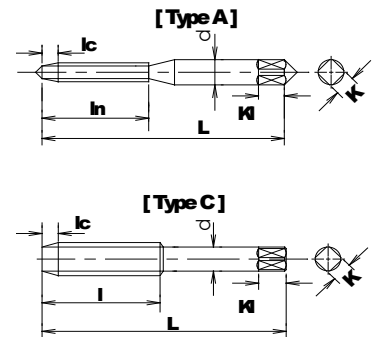


HTD ดอกตลับเกลียวสว่าน สีดำ SFT - OX ยาว 100 mm. BSW

รหัสสินค้า	SIZE	L	l	d	K	Kl	Flute		อัน / บาท
HT - 0109001	BSW 1/8 - 40	100	16.0	3.3	2.7	4.5	3	3	860
HT - 0109002	BSW 5/32 - 32	100	19.0	4.0	3.1	6.5	3	3	780
HT - 0109003	BSW 3/16 - 24	100	22.0	4.8	3.8	6.5	3	3	680
HT - 0109004	BSW 1/4 - 20	100	25.0	6.4	5.0	7.0	3	3	580
HT - 0109006	BSW 5/16 - 18	100	28.0	8.0	6.1	10.3	3	3	710
HT - 0109008	BSW 3/8 - 16	100	32.0	9.5	7.5	10.3	3	3	860
HT - 0109010	BSW 7/16 - 14	100	36.5	8.2	6.1	10.5	3	3	1,200
HT - 0109012	BSW 1/2 - 12	100	42.0	9.3	7.0	11.0	3	3	1,240


HTD ดอกต๊าปเกลียวสว่าน สีดำ SFT - OX ยาว 150 mm.

รหัสสินค้า	SIZE		L	l	d	K	Kl	Type	Flute	HL	อัน / บาท
	Dia	Pitch									
HT - 0110014	M3	x 0.5	150	18	4.0	3.2	6	A	3	2	1,440
HT - 0110018	M4	x 0.7	150	20	5.0	4.0	7	A	3	2	1,400
HT - 0110020	M5	x 0.8	150	22	5.5	4.5	7	A	3	2	1,100
HT - 0110024	M6	x 1.0	150	24	6.0	4.5	7	A	3	2	1,000
HT - 0110034	M8	x 1.25	150	30	6.2	5.0	8	C	3	2	1,200
HT - 0110038	M10	x 1.25	150	32	7.0	5.5	8	C	3	2	1,400
HT - 0110040	M10	x 1.5	150	32	7.0	5.5	8	C	3	2	1,400
HT - 0110044	M12	x 1.25	150	38	8.5	6.5	9	C	3	2	1,800
HT - 0110046	M12	x 1.5	150	38	8.5	6.5	9	C	3	2	1,800
HT - 0110048	M12	x 1.75	150	38	8.5	6.5	9	C	3	2	1,800


HTD ดอกต๊าปเกลียวสว่าน สีดำ SFT - OX ยาว 150 mm. BSW

รหัสสินค้า	SIZE			L	l	d	K	Kl	Flute	Z	อัน / บาท
HT - 0111001	BSW	1/8	- 40	150	16.0	3.3	2.7	4.5	3	3	1,440
HT - 0111002	BSW	5/32	- 32	150	19.0	4.0	3.1	6.5	3	3	1,400
HT - 0111003	BSW	3/16	- 24	150	22.0	4.8	3.8	6.5	3	3	1,100
HT - 0111004	BSW	1/4	- 20	150	25.0	6.4	5.0	7.0	3	3	1,000
HT - 0111006	BSW	5/16	- 18	150	28.0	8.0	6.1	10.3	3	3	1,200
HT - 0111008	BSW	3/8	- 16	150	32.0	9.5	7.5	10.3	3	3	1,400
HT - 0111010	BSW	7/16	- 14	150	36.5	8.2	6.1	10.5	3	3	1,800
HT - 0111012	BSW	1/2	- 12	150	42.0	9.3	7.0	11.0	3	3	2,000

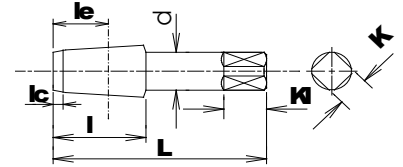
(Chamfer length : 2.5pitches / Type of flute : 35° right spiral flute.)

Materials : HSS/ Surface: Bright or OX)



HTD ดอกตลับเกลียวสว่าน สีดำ PT

รหัสสินค้า	SIZE		L	l	le	d	K	KI	Flute	บรรจุ	อัน / บาท
	Dia	Pitch									
HT - 0120002	1/8	PT 28	55	19	13.0	8.0	6	9	3		680
HT - 0120004	1/4	PT 19	62	28	21.0	11.0	9	12	3		970
HT - 0120006	3/8	PT 19	65	28	21.0	14.0	11	14	3		1,600
HT - 0120008	1/2	PT 14	80	35	25.0	18.0	14	17	4		2,500
HT - 0120010	3/4	PT 14	85	35	25.0	23.0	17	20	4		4,200
HT - 0120012	1"	PT 11	95	45	32.0	2.6	21	24	4		6,400



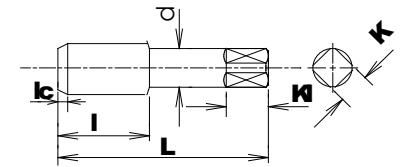
(Chamfer length : 2.5pitches / Type of flute : 35° right spiral flute.)

Materials : HSS/ Surface: Bright or OX)



HTD ดอกตลับเกลียวสว่าน สีดำ PS

รหัสสินค้า	SIZE		L	l	d	K	KI	Flute	บรรจุ	อัน / บาท
	Dia	Pitch								
HT - 0121002	1/8	PS 28	55	19	8.0	6	9	3		610
HT - 0121004	1/4	PS 19	62	28	11.0	9	12	3		870
HT - 0121006	3/8	PS 19	65	28	14.0	11	14	3		1,460
HT - 0121008	1/2	PS 14	80	35	18.0	14	17	4		2,290
HT - 0121010	3/4	PS 14	85	35	23.0	17	20	4		3,880
HT - 0121012	1"	PS 11	95	45	26.0	21	24	4		6,100



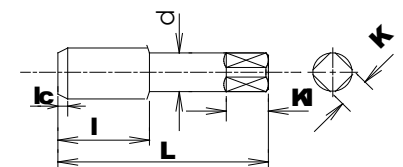
(Chamfer length : 2.5pitches / Type of flute : 35° right spiral flute.)

Materials : HSS/ Surface: Bright or OX)



HTD ดอกตลับเกลียวสว่าน สีดำ PF

รหัสสินค้า	SIZE		L	l	d	K	KI	Flute	บรรจุ	อัน / บาท
	Dia	Pitch								
HT - 0122002	1/8	PF 28	55	19	8.0	6	9	3		610
HT - 0122004	1/4	PF 19	62	28	11.0	9	12	3		870
HT - 0122006	3/8	PF 19	65	28	14.0	11	14	3		1,460
HT - 0122008	1/2	PF 14	80	35	18.0	14	17	4		2,290
HT - 0122010	3/4	PF 14	85	35	23.0	17	20	4		3,880
HT - 0122012	1"	PF 11	95	45	26.0	21	24	4		6,100

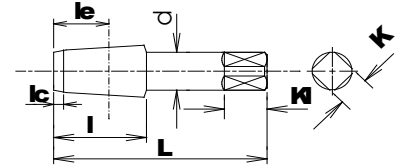


It is suitable for Stainless Steels and Heat Resistant Alloys.
 (Chamfer length : 2.5pitches / Type of flute : 8° left spiral flute.
 Materials : HSS / Surface: OX)



HTD ดอกตลับเกลียวสว่าน สีดำ S-PT

รหัสสินค้า	SIZE		L	l	le	d	K	Kl	Flute	บรรจุ	อัน / บาท	
	Dia	Pitch										
HT - 0125002	1/8	S-PT	28	55	17	10.5	8.0	6	9	3		680
HT - 0125004	1/4	S-PT	19	62	20	12.5	11.0	9	12	3		970
HT - 0125006	3/8	S-PT	19	65	21	14	14.0	11	14	5		1,600
HT - 0125008	1/2	S-PT	14	80	27	17	18.0	14	17	5		2,500
HT - 0125010	3/4	S-PT	14	85	29	19	23.0	17	20	5		4,200
HT - 0125012	1"	S-PT	11	95	35	22	26.0	21	24	5		6,400



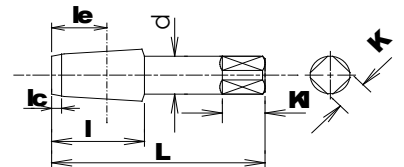
H.T.D ดอกตลับเกลียวสว่าน สีดำ NPT

(Chamfer length : 2.5pitches / Type of flute : 35° right spiral flute.
 Materials : HSS/ Surface: Bright or OX)



HTD ดอกตลับเกลียวสว่าน สีดำ NPT

รหัสสินค้า	SIZE		L	l	le	d	K	Kl	Flute	บรรจุ	อัน / บาท	
	Dia	Pitch										
HT - 0123002	1/8	NPT	27	55	19	12.1	8.0	6	9	3		840
HT - 0123004	1/4	NPT	18	62	28	17.5	11.0	9	12	3		1,080
HT - 0123006	3/8	NPT	18	65	28	17.7	14.0	11	14	3		1,800
HT - 0123008	1/2	NPT	14	80	35	22.9	18.0	14	17	4		2,800
HT - 0123010	3/4	NPT	14	85	35	23	23.0	17	20	4		4,800
HT - 0123012	1"	NPT	11.1/2	95	45	27.4	26.0	21	24	4		7,000



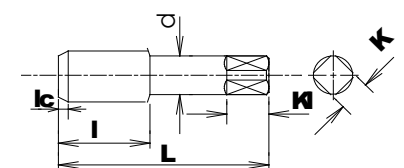
H.T.D ดอกตลับเกลียวสว่าน สีดำ NPS

(Chamfer length : 2.5pitches / Type of flute : 35° right spiral flute.
 Materials : HSS/ Surface: Bright or OX)



HTD ดอกตลับเกลียวสว่าน สีดำ NPS

รหัสสินค้า	SIZE		L	l	d	K	Kl	Flute	บรรจุ	อัน / บาท	
	Dia	Pitch									
HT - 0124002	1/8	NPS	27	55	19	8.0	6	9	3		710
HT - 0124004	1/4	NPS	18	62	28	11.0	9	12	3		920
HT - 0124006	3/8	NPS	18	65	28	14.0	11	14	3		1,500
HT - 0124008	1/2	NPS	14	80	35	18.0	14	17	4		2,400
HT - 0124010	3/4	NPS	14	85	35	23.0	17	20	4		4,000
HT - 0124012	1"	NPS	11.1/2	95	45	26.0	21	24	4		6,000

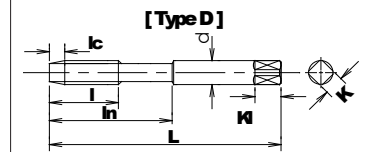
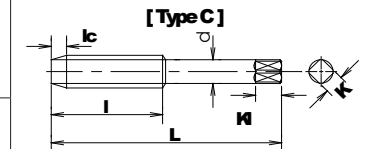
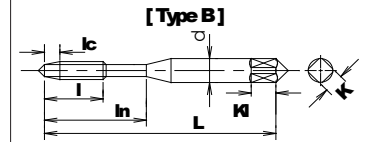
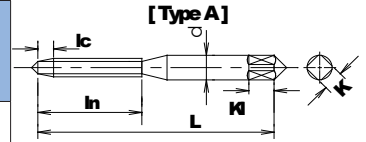


- 1.For Blind Holes.
 - 2.Materials where chips come out continuously in coil shape.
- (Chamfer length : 2.5pitches / Type of flute : 35° Right spiral flute.
/ Materials : HSSE. / Surface : Bright).



HTD ดอกตลับเกลียวสว่าง สีขาว SFT - BRIGHT

รหัสสินค้า	SIZE		L	l	ln	d	K	Kl	Type	SFT-N		บรรจุกุ	อัน / บาท
	Dia	Pitch								F	HL		
HT - 0201005	M2	x 0.4	40	15	-	3.0	2.5	5	A	2	1	10	480
HT - 0201007	M2.3	x 0.4	42	15	-	3.0	2.5	5	A	2	1	10	480
HT - 0201009	M2.5	x 0.45	44	16	-	3.0	2.5	5	A	2	1	10	400
HT - 0201012	M2.6	x 0.45	44	16	-	3.0	2.5	5	A	2	1	10	390
HT - 0201014	M3	x 0.5	46	11	19	4.0	3.2	6	B	3	2	10	260
HT - 0201016	M3.5	x 0.6	48	13	20	4.0	3.2	6	B	3	2	10	360
HT - 0201018	M4	x 0.7	52	13	21	5.0	4.0	7	B	3	2	10	260
HT - 0201020	M5	x 0.8	60	16	24	5.5	4.5	7	B	3	2	10	264
HT - 0201022	M6	x 0.75	62	20	-	6.0	4.5	7	A	3	2	10	320
HT - 0201024	M6	x 1.0	62	19	29	6.0	4.5	7	B	3	2	10	280
HT - 0201026	M7	x 0.75	62	20	-	6.2	5.0	8	A	3	2	10	460
HT - 0201028	M7	x 1.0	65	26	-	6.2	5.0	8	C	3	2	10	420
HT - 0201030	M8	x 0.75	62	20	-	6.2	5.0	8	C	3	2	10	440
HT - 0201032	M8	x 1.0	70	30	-	6.2	5.0	8	C	3	2	10	420
HT - 0201034	M8	x 1.25	70	22	37	6.2	5.0	8	D	3	2	10	380
HT - 0201036	M10	x 1.0	70	30	-	7.0	5.5	8	C	3	2	10	580
HT - 0201038	M10	x 1.25	75	32	-	7.0	5.5	8	C	3	2	10	520
HT - 0201040	M10	x 1.5	75	24	41	7.0	5.5	8	D	3	2	10	500
HT - 0201042	M12	x 1.0	70	30	-	8.5	6.5	9	C	3	2	3	760
HT - 0201044	M12	x 1.25	80	38	-	8.5	6.5	9	C	3	2	3	660
HT - 0201046	M12	x 1.5	82	38	-	8.5	6.5	9	C	3	2	3	660
HT - 0201048	M12	x 1.75	82	29	48	8.5	6.5	9	D	3	2	3	660
HT - 0201052	M14	x 1.0	70	30	-	10.5	8.0	11	C	3	2	3	1,040
HT - 0201054	M14	x 1.25	88	38	-	10.5	8.0	11	C	3	2	3	980
HT - 0201056	M14	x 1.5	88	42	-	10.5	8.0	11	C	3	2	3	940
HT - 0201058	M14	x 2.0	88	30	48	10.5	8.0	11	D	3	2	3	940
HT - 0201062	M16	x 1.0	75	35	-	12.5	10.0	13	C	3	2	3	1,400
HT - 0201064	M16	x 1.5	95	45	-	12.5	10.0	13	C	3	2	3	1,180
HT - 0201066	M16	x 2.0	95	32	52	12.5	10.0	13	D	3	2	3	1,180
HT - 0201070	M18	x 1.0	80	30	-	14.0	11.0	14	C	4	2	3	1,600

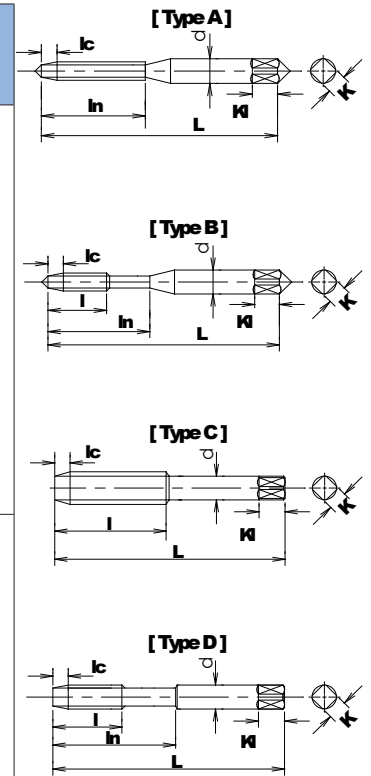


F : จำนวนฟัน (Number of flutes)
HL : Hayasaka original thread limit



HTD ดอกตลับเกลียวสว่าน สีขาว SFT - BRIGHT

รหัสสินค้า	SIZE		L	l	ln	d	K	Kl	Type	SFT-N		บรรจุ	อัน / บาท
	Dia	Pitch								F	HL		
HT - 0201072	M18	x 1.5	95	45	-	14.0	11.0	14	C	4	2	3	1,400
HT - 0201074	M18	x 2.0	95	45	-	14.0	11.0	14	C	4	3	3	1,500
HT - 0201076	M18	x 2.5	100	37	55	14.0	11.0	14	D	4	3	3	1,400
HT - 0201080	M20	x 1.0	80	30	-	15.0	12.0	15	C	4	2	3	2,000
HT - 0201082	M20	x 1.5	95	45	-	15.0	12.0	15	C	4	2	3	1,550
HT - 0201084	M20	x 2.0	95	4	-	15.0	12.0	15	C	4	3	3	1,700
HT - 0201086	M20	x 2.5	105	37	58	15.0	12.0	15	D	4	3	3	1,550
HT - 0201090	M22	x 1.5	95	45	-	17.0	13.0	16	C	4	2	3	2,100
HT - 0201092	M22	x 2.0	95	45	-	17.0	13.0	16	C	4	3	3	2,200
HT - 0201094	M22	x 2.5	115	38	63	17.0	13.0	16	D	4	3	3	2,100
HT - 0201098	M24	x 1.5	95	45	-	19.0	15.0	18	C	4	2	1	2,700
HT - 0201100	M24	x 3.0	120	45	66	19.0	15.0	18	D	4	3	1	2,700
HT - 0201102	M25	x 1.5	95	45	-	19.0	15.0	18	C	4	2	1	4,200
HT - 0201104	M26	x 1.5	95	45	-	20.0	15.0	18	C	4	2	1	4,200
HT - 0201106	M26	x 3.0	130	62	-	20.0	15.0	18	C	4	3	1	4,000
HT - 0201110	M27	x 1.5	95	45	-	20.0	15.0	18	C	4	2	1	5,000
HT - 0201112	M27	x 3.0	130	45	71	20.0	15.0	18	D	4	3	1	4,700
HT - 0201116	M30	x 1.5	105	45	-	23.0	17.0	20	C	4	2	1	6,400
HT - 0201118	M30	x 3.5	135	48	74	23.0	17.0	20	D	4	3	1	6,000
HT - 0201124	M33	x 3.5	145	51	77	25.0	19.0	22	D	4	JIS2	1	10,000
HT - 0201130	M36	x 4.0	155	57	82	28.0	21.0	24	D	4	JIS2	1	11,000

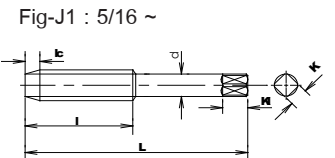
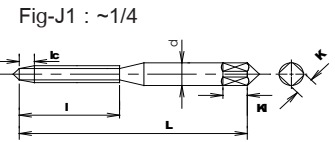


F : จำนวนฟัน (Number of flutes)
HL : Hayasaka original thread limit



HTD ดอกตลับเกลียวสว่าน สีขาว SFT - N BSW

รหัสสินค้า	SIZE	L	l	d	K	Kl	SFT-N		บรรจุ	อัน / บาท
							F	Z		
HT - 0202001	BSW 1/8 - 40	49	16.0	3.3	2.7	4.5	3	3	10	290
HT - 0202002	BSW 5/32 - 32	54	19.0	4.0	3.1	6.5	3	3	10	290
HT - 0202003	BSW 3/16 - 24	61	22.0	4.8	3.8	6.5	3	3	10	290
HT - 0202004	BSW 1/4 - 20	64	25.0	6.4	5.0	7.0	3	3	10	310
HT - 0202006	BSW 5/16 - 18	70	28.0	8.0	6.1	10.3	3	3	10	410
HT - 0202008	BSW 3/8 - 16	75	32.0	9.5	7.5	10.3	3	3	10	480
HT - 0202010	BSW 7/16 - 14	80	36.5	8.2	6.1	10.5	3	3	3	680
HT - 0202012	BSW 1/2 - 12	86	42.0	9.3	7.0	11.0	3	3	3	800
HT - 0202014	BSW 9/16 - 12	91	42.0	10.9	8.2	12.7	3	3	3	1,270
HT - 0202016	BSW 5/8 - 11	97	46.0	12.2	9.1	14.0	3	3	3	1,300
HT - 0202018	BSW 3/4 - 10	108	51.0	15.0	11.2	17.5	4	3	3	1,800
HT - 0202020	BSW 7/8 - 9	119	56.5	17.7	13.3	19.0	4	3	3	2,350
HT - 0202022	BSW 1" - 8	130	63.5	20.3	15.24	20.5	4	3	1	3,140

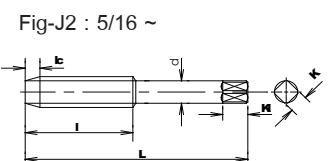
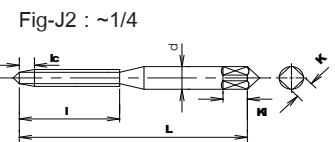


F : จำนวนฟัน (Number of flutes)

Z : Zone

HTD ดอกตลับเกลียวสว่าน สีขาว SFT - N UNF

รหัสสินค้า	SIZE	L	l	d	K	Kl	SFT-N		บรรจุ	อัน / บาท
							F	JC		
HT - 0203004	UNF 1/4 - 28	62	24	6.0	4.5	7.0	3	2	10	370
HT - 0203006	UNF 5/16 - 24	70	30	6.1	5.0	8.0	3	2	10	420
HT - 0203008	UNF 3/8 - 24	75	35	7.0	5.5	8.0	3	2	10	540
HT - 0203010	UNF 7/16 - 20	80	38	8.0	6	9.0	3	2	3	740
HT - 0203012	UNF 1/2 - 20	85	42	9.0	7	10.0	3	2	3	900
HT - 0203014	UNF 9/16 - 18	90	42	10.5	8	11.0	3	2	3	1,340
HT - 0203016	UNF 5/8 - 18	95	45	12.0	9	12.0	3	2	3	1,340
HT - 0203018	UNF 3/4 - 16	105	50	14.0	11	14.0	4	2	3	1,900
HT - 0203020	UNF 7/8 - 14	115	55	17.0	13	16.0	4	2	3	2,700
HT - 0203022	UNF 1" - 12	125	60	20.0	15	18.0	4	2	1	3,600

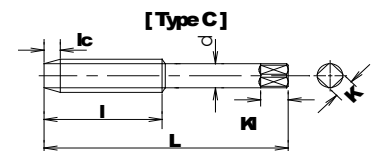
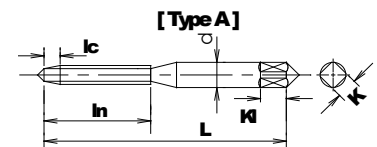


F : จำนวนฟัน (Number of flutes)

JC : JIS class of the thread limit


HTD ดอกต๊าปเกลียวสว่าน สีขาว SFT - N ยาว 100 MM.

รหัสสินค้า	SIZE		L	l	d	K	Kl	Type	Flute	HL	อัน / บาท
	Dia	Pitch									
HT - 0208014	M3	x 0.5	100	18	4.0	3.2	6	A	3	2	860
HT - 0208018	M4	x 0.7	100	20	5.0	4.0	7	A	3	2	780
HT - 0208020	M5	x 0.8	100	22	5.5	4.5	7	A	3	2	680
HT - 0208024	M6	x 1.0	100	24	6.0	4.5	7	A	3	2	580
HT - 0208034	M8	x 1.25	100	30	6.2	5.0	8	C	3	2	710
HT - 0208038	M10	x 1.25	100	32	7.0	5.5	8	C	3	2	860
HT - 0208040	M10	x 1.5	100	32	7.0	5.5	8	C	3	2	860
HT - 0208044	M12	x 1.25	100	38	8.5	6.5	9	C	3	2	1,200
HT - 0208046	M12	x 1.5	100	38	8.5	6.5	9	C	3	2	1,200
HT - 0208048	M12	x 1.75	100	38	8.5	6.5	9	C	3	2	1,200

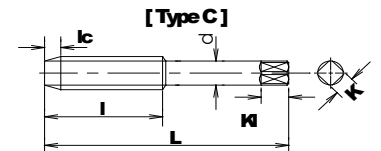
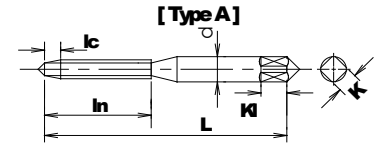

HTD ดอกต๊าปเกลียวสว่าน สีขาว SFT - N ยาว 100 MM. BSW

รหัสสินค้า	SIZE			L	l	d	K	Kl	Flute	Z	อัน / บาท
HT - 0209001	BSW	1/8	- 40	100	16.0	3.3	2.7	4.5	3	3	860
HT - 0209002	BSW	5/32	- 32	100	19.0	4.0	3.1	6.5	3	3	780
HT - 0209003	BSW	3/16	- 24	100	22.0	4.8	3.8	6.5	3	3	680
HT - 0209004	BSW	1/4	- 20	100	25.0	6.4	5.0	7.0	3	3	580
HT - 0209006	BSW	5/16	- 18	100	28.0	8.0	6.1	10.3	3	3	710
HT - 0209008	BSW	3/8	- 16	100	32.0	9.5	7.5	10.3	3	3	860
HT - 0209010	BSW	7/16	- 14	100	36.5	8.2	6.1	10.5	3	3	1,200
HT - 0209012	BSW	1/2	- 12	100	42.0	9.3	7.0	11.0	3	3	1,240



HTD ดอกต๊าปเกลียวสว่าน สีขาว SFT-N ยาว 150 MM.

รหัสสินค้า	SIZE		L	l	d	K	Kl	Type	Flute	HL	อัน / บาท
	Dia	Pitch									
HT - 0210014	M3	x 0.5	150	18	4.0	3.2	6	A	3	2	1,440
HT - 0210018	M4	x 0.7	150	20	5.0	4.0	7	A	3	2	1,400
HT - 0210020	M5	x 0.8	150	22	5.5	4.5	7	A	3	2	1,100
HT - 0210024	M6	x 1.0	150	24	6.0	4.5	7	A	3	2	1,000
HT - 0210034	M8	x 1.25	150	30	6.2	5.0	8	C	3	2	1,200
HT - 0210038	M10	x 1.25	150	32	7.0	5.5	8	C	3	2	1,400
HT - 0210040	M10	x 1.5	150	32	7.0	5.5	8	C	3	2	1,400
HT - 0210044	M12	x 1.25	150	38	8.5	6.5	9	C	3	2	1,800
HT - 0210046	M12	x 1.5	150	38	8.5	6.5	9	C	3	2	1,800
HT - 0210048	M12	x 1.75	150	38	8.5	6.5	9	C	3	2	1,800



HTD ดอกต๊าปเกลียวสว่าน สีขาว SFT-N ยาว 150 MM. BSW

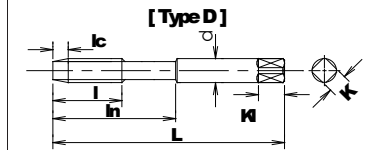
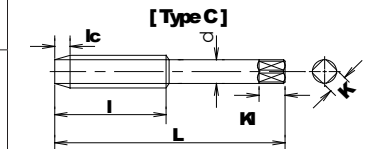
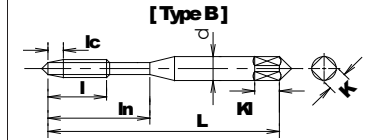
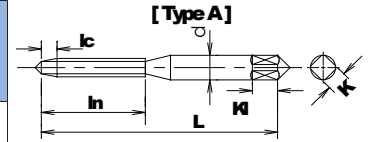
รหัสสินค้า	SIZE		L	l	d	K	Kl	Flute	Z	อัน / บาท
HT - 0211001	BSW	1/8 - 40	150	16.0	3.3	2.7	4.5	3	3	1,440
HT - 0211002	BSW	5/32 - 32	150	19.0	4.0	3.1	6.5	3	3	1,400
HT - 0211003	BSW	3/16 - 24	150	22.0	4.8	3.8	6.5	3	3	1,100
HT - 0211004	BSW	1/4 - 20	150	25.0	6.4	5.0	7.0	3	3	1,000
HT - 0211006	BSW	5/16 - 18	150	28.0	8.0	6.1	10.3	3	3	1,200
HT - 0211008	BSW	3/8 - 16	150	32.0	9.5	7.5	10.3	3	3	1,400
HT - 0211010	BSW	7/16 - 14	150	36.5	8.2	6.1	10.5	3	3	1,800
HT - 0211012	BSW	1/2 - 12	150	42.0	9.3	7.0	11.0	3	3	2,000

- 1.For Through Holes.
 - 2.Pushes chips forward with low cutting torque.)
 - 3.Materials where chips come out continuously in coil shape.
- (Chamfer length : 5pitches / Materials : HSSE. / Surface : OX).



HTD ดอกตลับเกลียวทูล สีดำ POT - OX

รหัสสินค้า	SIZE		L	l	ln	d	K	Kl	Type	F	HL	บรรจุ	อัน / บาท
	Dia	Pitch											
HT - 1001005	M2	x 0.4	40	15	-	3.0	2.5	5	A	2	1	10	440
HT - 1001007	M2.3	x 0.4	42	15	-	3.0	2.5	5	A	2	1	10	440
HT - 1001009	M2.5	x 0.45	44	16	-	3.0	2.5	5	A	2	2	10	380
HT - 1001012	M2.6	x 0.45	44	16	-	3.0	2.5	5	A	2	2	10	370
HT - 1001014	M3	x 0.5	46	11	19	4.0	3.2	6	B	3	2	10	260
HT - 1001016	M3.5	x 0.6	48	13	20	4.0	3.2	6	A	3	2	10	330
HT - 1001018	M4	x 0.7	52	13	21	5.0	4.0	7	B	3	2	10	260
HT - 1001020	M5	x 0.8	60	16	24	5.5	4.5	7	B	3	2	10	264
HT - 1001022	M6	x 0.75	62	20	-	6.0	4.5	7	A	3	2	10	300
HT - 1001024	M6	x 1.0	62	19	29	6.0	4.5	7	B	3	2	10	280
HT - 1001026	M7	x 0.75	62	20	-	6.2	5.0	8	C	3	2	10	410
HT - 1001028	M7	x 1.0	65	26	-	6.2	5.0	8	C	3	2	10	400
HT - 1001030	M8	x 0.75	62	20	-	6.2	5.0	8	C	3	2	10	400
HT - 1001032	M8	x 1.0	70	30	-	6.2	5.0	8	C	3	2	10	400
HT - 1001034	M8	x 1.25	70	22	37	6.2	5.0	8	D	3	3	10	370
HT - 1001036	M10	x 1.0	70	30	-	7.0	5.5	8	C	3	3	10	520
HT - 1001038	M10	x 1.25	75	32	-	7.0	5.5	8	C	3	3	10	500
HT - 1001040	M10	x 1.5	75	24	41	7.0	5.5	8	D	3	3	10	480
HT - 1001042	M12	x 1.0	70	30	-	8.5	6.5	9	C	3	3	3	650
HT - 1001044	M12	x 1.25	80	38	-	8.5	6.5	9	C	3	4	3	620
HT - 1001046	M12	x 1.5	82	38	-	8.5	6.5	9	C	3	3	3	620
HT - 1001048	M12	x 1.75	82	29	48	8.5	6.5	9	D	3	4	3	620
HT - 1001052	M14	x 1.0	70	30	-	10.5	8.0	11	C	3	3	3	980
HT - 1001054	M14	x 1.25	88	38	-	10.5	8.0	11	C	3	3	3	980
HT - 1001056	M14	x 1.5	88	42	-	10.5	8.0	11	C	3	3	3	900
HT - 1001058	M14	x 2.0	88	30	48	10.5	8.0	11	D	3	4	3	880
HT - 1001062	M16	x 1.0	75	35	-	12.5	10.0	13	C	3	3	3	1,250
HT - 1001064	M16	x 1.5	95	45	-	12.5	10.0	13	C	3	3	3	1,050
HT - 1001066	M16	x 2.0	95	32	52	12.5	10.0	13	D	3	4	3	1,000
HT - 1001070	M18	x 1.0	80	30	-	14.0	11.0	14	C	3	3	3	1,400
HT - 1001072	M18	x 1.5	95	45	-	14.0	11.0	14	C	3	4	3	1,270
HT - 1001074	M18	x 2.0	95	45	-	14.0	11.0	14	C	3	4	3	1,300
HT - 1001076	M18	x 2.5	100	37	55	14.0	11.0	14	D	3	4	3	1,200
HT - 1001080	M20	x 1.0	80	30	-	15.0	12.0	15	C	3	3	3	1,800
HT - 1001082	M20	x 1.5	95	45	-	15.0	12.0	15	C	3	4	3	1,440
HT - 1001084	M20	x 2.0	95	45	-	15.0	12.0	15	C	3	4	3	1,500
HT - 1001086	M20	x 2.5	105	37	58	15.0	12.0	15	D	3	4	3	1,400
HT - 1001090	M22	x 1.5	95	45	-	17.0	13.0	16	C	3	4	3	1,900
HT - 1001092	M22	x 2.0	95	45	-	17.0	13.0	16	C	3	4	3	2,000
HT - 1001094	M22	x 2.5	115	38	63	17.0	13.0	16	D	3	4	3	1,900
HT - 1001098	M24	x 1.5	95	45	-	19.0	15.0	18	C	4	4	1	2,500
HT - 1001100	M24	x 3.0	120	45	66	19.0	15.0	18	D	4	4	1	2,400



F : จำนวนฟัน (Number of flutes)
HL : Hayasaka original thread limit



HTD ดอกตลับเกลียวทูลู สีดำ POT - OX BSW (BS-WHITWORTH)

รหัสสินค้า	SIZE	L	l	d	K	KI	POT		บรรจุ	อัน / บาท
							F	Z		
HT - 1002001	BSW 1/8 - 40	49	16.0	3.3	2.7	4.5	3	3		280
HT - 1002002	BSW 5/32 - 32	54	19.0	4.0	3.1	6.5	3	3		280
HT - 1002003	BSW 3/16 - 24	61	22.0	4.8	3.8	6.5	3	3		280
HT - 1002004	BSW 1/4 - 20	64	25.0	6.4	5.0	7.0	3	3		300
HT - 1002006	BSW 5/16 - 18	70	28.0	8.0	6.1	10.3	3	3		380
HT - 1002008	BSW 3/8 - 16	75	32.0	9.5	7.5	10.3	3	3		440
HT - 1002010	BSW 7/16 - 14	80	36.5	8.2	6.1	10.5	3	3		640
HT - 1002012	BSW 1/2 - 12	86	42.0	9.3	7.0	11.0	3	3		750
HT - 1002014	BSW 9/16 - 12	91	42.0	10.9	8.2	12.7	3	3		1,200
HT - 1002016	BSW 5/8 - 11	97	46.0	12.2	9.1	14.0	3	3		1,220
HT - 1002018	BSW 3/4 - 10	108	51.0	15.0	11.2	17.5	3	3		1,700
HT - 1002020	BSW 7/8 - 9	119	56.5	17.7	13.3	19.0	3	3		2,300
HT - 1002022	BSW 1" - 8	130	63.5	20.3	15.2	20.5	4	3		3,000

Fig-J1 : ~1/4

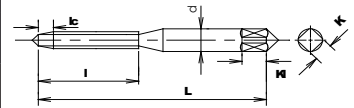
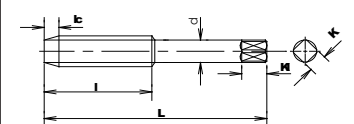


Fig-J1 : 5/16 ~



F : จำนวนฟัน (Number of flutes)

Z : Zone

HTD ดอกตลับเกลียวทูลู สีดำ POT - OX UNF

รหัสสินค้า	SIZE	L	l	d	K	KI	POT-OX HSS		บรรจุ	อัน / บาท
							F	JC		
HT - 1003004	1/4 UNF 28	62	24	6.0	4.5	7.0	3	2		350
HT - 1003006	5/16 UNF 24	70	30	6.1	5.1	8.0	3	2		400
HT - 1003008	3/8 UNF 24	75	35	7.0	5.5	8.0	3	2		500
HT - 1003010	7/16 UNF 20	80	38	8.0	6.0	9.0	3	2		650
HT - 1003012	1/2 UNF 20	85	42	9.0	7.0	10.0	3	2		850
HT - 1003014	9/16 UNF 18	90	42	10.5	8.0	11.0	3	2		1,200
HT - 1003016	5/8 UNF 18	95	45	12.0	9.0	12.0	3	2		1,240
HT - 1003018	3/4 UNF 16	105	50	14.0	11.0	14.0	3	2		1,700
HT - 1003020	7/8 UNF 14	115	55	17.0	13.0	16.0	3	2		2,400
HT - 1003022	1" UNF 12	125	60	20.0	15.0	18.0	4	2		3,200

Fig-J2 : ~1/4

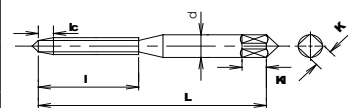
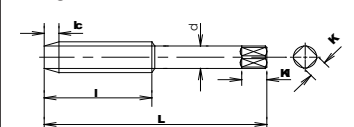


Fig-J2 : 5/16 ~



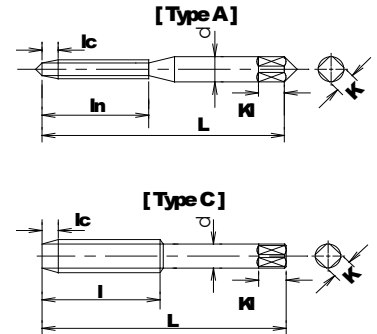
F : จำนวนฟัน (Number of flutes)

JC : JIS class of the thread limit



HTD ดอกตลับเกลียวทูลู สีดำ LT - POT - OX ยาว 100 mm.

รหัสสินค้า	SIZE		L	l	d	K	Kl	Type	Flute	HL	อัน / บาท
	Dia	Pitch									
HT - 1010014	M3	× 0.5	100	18	4.0	3.2	6	A	3	2	800
HT - 1010018	M4	× 0.7	100	20	5.0	4.0	7	A	3	2	740
HT - 1010020	M5	× 0.8	100	22	5.5	4.5	7	A	3	2	640
HT - 1010024	M6	× 1.0	100	24	6.0	4.5	7	A	3	2	540
HT - 1010034	M8	× 1.25	100	30	6.2	5.0	8	C	3	2	680
HT - 1010038	M10	× 1.25	100	32	7.0	5.5	8	C	3	2	820
HT - 1010040	M10	× 1.5	100	32	7.0	5.5	8	C	3	2	820
HT - 1010044	M12	× 1.25	100	38	8.5	6.5	9	C	3	2	1,150
HT - 1010046	M12	× 1.5	100	38	8.5	6.5	9	C	3	2	1,150
HT - 1010048	M12	× 1.75	100	38	8.5	6.5	9	C	3	2	1,150



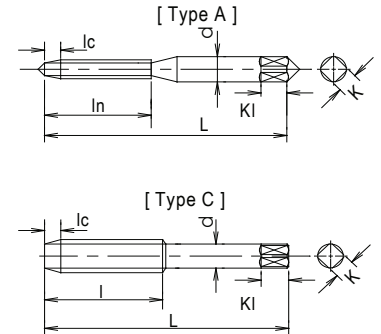
HTD ดอกตลับเกลียวทูลู สีดำ LT - POT - OX ยาว 100 mm. BSW

รหัสสินค้า	SIZE	L	l	d	K	Kl	Flute	Z	อัน / บาท
HT - 1011001	BSW 1/8 - 40	100	16.0	3.3	2.7	4.5	3	3	800
HT - 1011002	BSW 5/32 - 32	100	19.0	4.0	3.1	6.5	3	3	730
HT - 1011003	BSW 3/16 - 24	100	22.0	4.8	3.8	6.5	3	3	630
HT - 1011004	BSW 1/4 - 20	100	25.0	6.4	5.0	7.0	3	3	540
HT - 1011006	BSW 5/16 - 18	100	28.0	8.0	6.1	10.3	3	3	670
HT - 1011008	BSW 3/8 - 16	100	32.0	9.5	7.5	10.3	3	3	830
HT - 1011010	BSW 7/16 - 14	100	36.5	8.2	6.1	10.5	3	3	1,160
HT - 1011012	BSW 1/2 - 12	100	42.0	9.3	7.0	11.0	3	3	1,180



HTD ดอกต๊าปเกลียวทูลู สีดำ LT - POT - OX ยาว 150 MM.

รหัสสินค้า	SIZE		L	l	d	K	Kl	Type	Flute	HL	อัน / บาท
	Dia	Pitch									
HT - 1012014	M3	× 0.5	150	18	4.0	3.2	6	A	3	2	1,360
HT - 1012018	M4	× 0.7	150	20	5.0	4.0	7	A	3	2	1,340
HT - 1012020	M5	× 0.8	150	22	5.5	4.5	7	A	3	2	1,050
HT - 1012024	M6	× 1.0	150	24	6.0	4.5	7	A	3	2	960
HT - 1012034	M8	× 1.25	150	30	6.2	5.0	8	C	3	2	1,130
HT - 1012038	M10	× 1.25	150	32	7.0	5.5	8	C	3	2	1,340
HT - 1012040	M10	× 1.5	150	32	7.0	5.5	8	C	3	2	1,340
HT - 1012044	M12	× 1.25	150	38	8.5	6.5	9	C	3	2	1,700
HT - 1012046	M12	× 1.5	150	38	8.5	6.5	9	C	3	2	1,700
HT - 1012048	M12	× 1.75	150	38	8.5	6.5	9	C	3	2	1,700



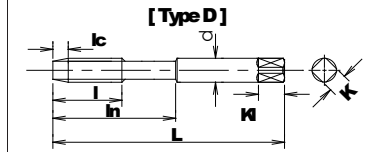
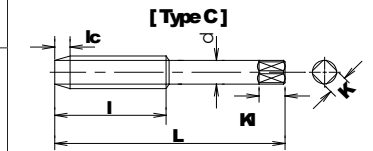
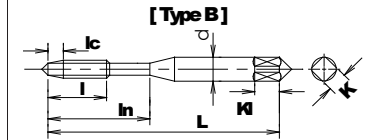
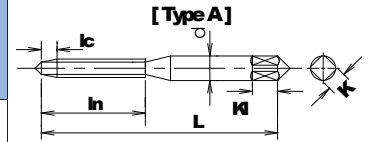
HTD ดอกต๊าปเกลียวทูลู สีดำ LT - POT - OX ยาว 150 mm. BSW

รหัสสินค้า	SIZE		L	l	d	K	Kl	Flute	Z	อัน / บาท
HT - 1013001	BSW	1/8 - 40	150	16.0	3.3	2.7	4.5	3	3	1,370
HT - 1013002	BSW	5/32 - 32	150	19.0	4.0	3.1	6.5	3	3	1,350
HT - 1013003	BSW	3/16 - 24	150	22.0	4.8	3.8	6.5	3	3	1,040
HT - 1013004	BSW	1/4 - 20	150	25.0	6.4	5.0	7.0	3	3	960
HT - 1013006	BSW	5/16 - 18	150	28.0	8.0	6.1	10.3	3	3	1,130
HT - 1013008	BSW	3/8 - 16	150	32.0	9.5	7.5	10.3	3	3	1,340
HT - 1013010	BSW	7/16 - 14	150	36.5	8.2	6.1	10.5	3	3	1,700
HT - 1013012	BSW	1/2 - 12	150	42.0	9.3	7.0	11.0	3	3	1,900



HTD ดอกต๊าปเกลียวทูล สีขาว POT

รหัสสินค้า	SIZE		L	l	ln	d	K	Kl	Type	F	HL	บรรจุ	อัน / บาท
	Dia	Pitch											
HT - 1101005	M2	x 0.4	40	15	-	3.0	2.5	5	A	2	1	10	440
HT - 1101007	M2.3	x 0.4	42	15	-	3.0	2.5	5	A	2	1	10	440
HT - 1101009	M2.5	x 0.45	44	16	-	3.0	2.5	5	A	2	2	10	380
HT - 1101012	M2.6	x 0.45	44	16	-	3.0	2.5	5	A	2	2	10	370
HT - 1101014	M3	x 0.5	46	11	19	4.0	3.2	6	B	3	2	10	260
HT - 1101016	M3.5	x 0.6	48	13	20	4.0	3.2	6	A	3	2	10	330
HT - 1101018	M4	x 0.7	52	13	21	5.0	4.0	7	B	3	2	10	260
HT - 1101020	M5	x 0.8	60	16	24	5.5	4.5	7	B	3	2	10	264
HT - 1101022	M6	x 0.75	62	20	-	6.0	4.5	7	A	3	2	10	300
HT - 1101024	M6	x 1.0	62	19	29	6.0	4.5	7	B	3	2	10	280
HT - 1101026	M7	x 0.75	62	20	-	6.2	5.0	8	C	3	2	10	410
HT - 1101028	M7	x 1.0	65	26	-	6.2	5.0	8	C	3	2	10	400
HT - 1101030	M8	x 0.75	62	20	-	6.2	5.0	8	C	3	2	10	400
HT - 1101032	M8	x 1.0	70	30	-	6.2	5.0	8	C	3	2	10	400
HT - 1101034	M8	x 1.25	70	22	37	6.2	5.0	8	D	3	3	10	370
HT - 1101036	M10	x 1.0	70	30	-	7.0	5.5	8	C	3	3	10	520
HT - 1101038	M10	x 1.25	75	32	-	7.0	5.5	8	C	3	3	10	500
HT - 1101040	M10	x 1.5	75	24	41	7.0	5.5	8	D	3	3	10	480
HT - 1101042	M12	x 1.0	70	30	-	8.5	6.5	9	C	3	3	3	650
HT - 1101044	M12	x 1.25	80	38	-	8.5	6.5	9	C	3	4	3	620
HT - 1101046	M12	x 1.5	82	38	-	8.5	6.5	9	C	3	3	3	620
HT - 1101048	M12	x 1.75	82	29	48	8.5	6.5	9	D	3	4	3	620
HT - 1101052	M14	x 1.0	70	30	-	10.5	8.0	11	C	3	3	3	980
HT - 1101054	M14	x 1.25	88	38	-	10.5	8.0	11	C	3	3	3	980
HT - 1101056	M14	x 1.5	88	42	-	10.5	8.0	11	C	3	3	3	900
HT - 1101058	M14	x 2.0	88	30	48	10.5	8.0	11	D	3	4	3	880
HT - 1101062	M16	x 1.0	75	35	-	12.5	10.0	13	C	3	3	3	1,250
HT - 1101064	M16	x 1.5	95	45	-	12.5	10.0	13	C	3	3	3	1,080
HT - 1101066	M16	x 2.0	95	32	52	12.5	10.0	13	D	3	4	3	1,000
HT - 1101070	M18	x 1.0	80	30	-	14.0	11.0	14	C	3	3	3	1,400
HT - 1101072	M18	x 1.5	95	45	-	14.0	11.0	14	C	3	4	3	1,270
HT - 1101074	M18	x 2.0	95	45	-	14.0	11.0	14	C	3	4	3	1,300
HT - 1101076	M18	x 2.5	100	37	55	14.0	11.0	14	D	3	4	3	1,200
HT - 1101080	M20	x 1.0	80	30	-	15.0	12.0	15	C	3	3	3	1,800
HT - 1101082	M20	x 1.5	95	45	-	15.0	12.0	15	C	3	4	3	1,440
HT - 1101084	M20	x 2.0	95	45	-	15.0	12.0	15	C	3	4	3	1,500
HT - 1101086	M20	x 2.5	105	37	58	15.0	12.0	15	D	3	4	3	1,400
HT - 1101090	M22	x 1.5	95	45	-	17.0	13.0	16	C	3	4	3	1,900
HT - 1101092	M22	x 2.0	95	45	-	17.0	13.0	16	C	3	4	3	2,000
HT - 1101094	M22	x 2.5	115	38	63	17.0	13.0	16	D	3	4	3	1,900
HT - 1101098	M24	x 1.5	95	45	-	19.0	15.0	18	C	4	4	1	2,500
HT - 1101100	M24	x 3.0	120	45	66	19.0	15.0	18	D	4	4	1	2,400



F : จำนวนฟัน (Number of flutes)

HL : Hayasaka original thread limit



HTD ดอกตลับเกลียวทูลู สีขาว POT

รหัสสินค้า	SIZE			L	l	d	K	KI	POT		บรรจุ	อื่น / บาท	
									F	Z			
HT - 1102001	BSW	1/8	-	40	49	16.0	3.3	2.7	4.5	3	3		280
HT - 1102002	BSW	5/32	-	32	54	19.0	4.0	3.1	6.5	3	3		280
HT - 1102003	BSW	3/16	-	24	61	22.0	4.8	3.8	6.5	3	3		280
HT - 1102004	BSW	1/4	-	20	64	25.0	6.4	5.0	7.0	3	3		300
HT - 1102006	BSW	5/16	-	18	70	28.0	8.0	6.1	10.3	3	3		380
HT - 1102008	BSW	3/8	-	16	75	32.0	9.5	7.5	10.3	3	3		440
HT - 1102010	BSW	7/16	-	14	80	36.5	8.2	6.1	10.5	3	3		640
HT - 1102012	BSW	1/2	-	12	86	42.0	9.3	7.0	11.0	3	3		750
HT - 1102014	BSW	9/16	-	12	91	42.0	10.9	8.2	12.7	3	3		1,200
HT - 1102016	BSW	5/8	-	11	97	46.0	12.2	9.1	14.0	3	3		1,220
HT - 1102018	BSW	3/4	-	10	108	51.0	15.0	11.2	17.5	3	3		1,700
HT - 1102020	BSW	7/8	-	9	119	56.5	17.7	13.3	19.0	3	3		2,300
HT - 1102022	BSW	1"	-	8	130	63.5	20.3	15.2	20.5	4	3		3,000

Fig-J1 : ~1/4

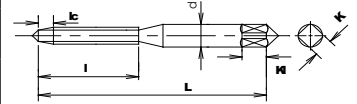
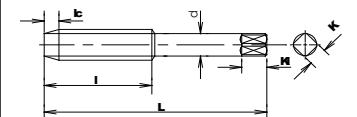


Fig-J1 : 5/16 ~



F : จำนวนฟัน (Number of flutes)

Z : Zone

HTD ดอกตลับเกลียวทูลู สีขาว POT UNF

รหัสสินค้า	SIZE			L	l	d	K	KI	POT HSS		บรรจุ	อื่น / บาท
									F	JC		
HT - 1103004	1/4	UNF	28	62	24	6.0	4.5	7.0	3	2		350
HT - 1103006	5/16	UNF	24	70	30	6.1	5.0	8.0	3	2		400
HT - 1103008	3/8	UNF	24	75	35	7.0	5.5	8.0	3	2		500
HT - 1103010	7/16	UNF	20	80	38	8.0	6.0	9.0	3	2		650
HT - 1103012	1/2	UNF	20	85	42	9.0	7.0	10.0	3	2		850
HT - 1103014	9/16	UNF	18	90	42	10.5	8.0	11.0	3	2		1,200
HT - 1103016	5/8	UNF	18	95	45	12.0	9.0	12.0	3	2		1,240
HT - 1103018	3/4	UNF	16	105	50	14.0	11.0	14.0	3	2		1,700
HT - 1103020	7/8	UNF	14	115	55	17.0	13.0	16.0	3	2		2,400
HT - 1103022	1"	UNF	12	125	60	20.0	15.0	18.0	4	2		3,200

Fig-J2 : ~1/4

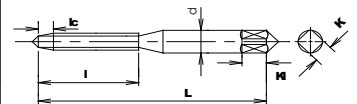
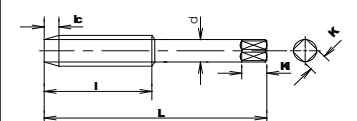


Fig-J2 : 5/16 ~



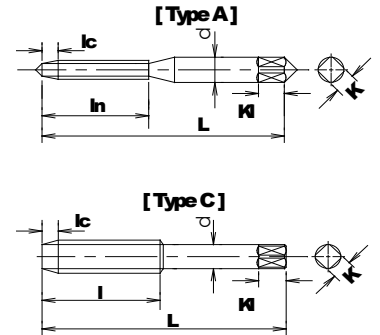
F : จำนวนฟัน (Number of flutes)

JC : JIS class of the thread limit



HTD ดอกตลับเกลียวทูลู สีขาว LT - POT ยาว 100 mm.

รหัสสินค้า	SIZE		L	l	d	K	Kl	Type	Flute	HL	อื่น / บาท
	Dia	Pitch									
HT - 1110014	M3	× 0.5	100	18	4.0	3.2	6	A	3	2	800
HT - 1110018	M4	× 0.7	100	20	5.0	4.0	7	A	3	2	740
HT - 1110020	M5	× 0.8	100	22	5.5	4.5	7	A	3	2	640
HT - 1110024	M6	× 1.0	100	24	6.0	4.5	7	A	3	2	540
HT - 1110034	M8	× 1.25	100	30	6.2	5.0	8	C	3	2	680
HT - 1110038	M10	× 1.25	100	32	7.0	5.5	8	C	3	2	820
HT - 1110040	M10	× 1.5	100	32	7.0	5.5	8	C	3	2	820
HT - 1110044	M12	× 1.25	100	38	8.5	6.5	9	C	3	2	1,150
HT - 1110046	M12	× 1.5	100	38	8.5	6.5	9	C	3	2	1,150
HT - 1110048	M12	× 1.75	100	38	8.5	6.5	9	C	3	2	1,150

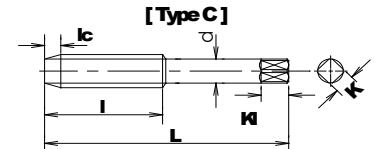
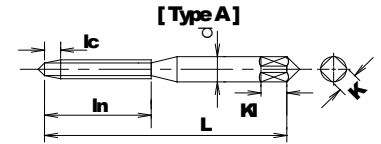


HTD ดอกตลับเกลียวทูลู สีขาว LT - POT ยาว 100 mm. BSW

รหัสสินค้า	SIZE		L	l	d	K	Kl	Flute	Z	อื่น / บาท
HT - 1111001	BSW	1/8 - 40	100	16.0	3.3	2.7	4.5	3	3	800
HT - 1111002	BSW	5/32 - 32	100	19.0	4.0	3.1	6.5	3	3	730
HT - 1111003	BSW	3/16 - 24	100	22.0	4.8	3.8	6.5	3	3	630
HT - 1111004	BSW	1/4 - 20	100	25.0	6.4	5.0	7.0	3	3	540
HT - 1111006	BSW	5/16 - 18	100	28.0	8.0	6.1	10.3	3	3	670
HT - 1111008	BSW	3/8 - 16	100	32.0	9.5	7.5	10.3	3	3	830
HT - 1111010	BSW	7/16 - 14	100	36.5	8.2	6.1	10.5	3	3	1,160
HT - 1111012	BSW	1/2 - 12	100	42.0	9.3	7.0	11.0	3	3	1,180


HTD ดอกลูกยาว หลุม สี่เหลี่ยม LT - POT ยาว 150 มม.

รหัสสินค้า	SIZE		L	l	d	K	Kl	Type	Flute	HL	อัน / บาท
	Dia	Pitch									
HT - 1112014	M3	× 0.5	150	18	4.0	3.2	6	A	3	2	1,360
HT - 1112018	M4	× 0.7	150	20	5.0	4.0	7	A	3	2	1,340
HT - 1112020	M5	× 0.8	150	22	5.5	4.5	7	A	3	2	1,050
HT - 1112024	M6	× 1.0	150	24	6.0	4.5	7	A	3	2	960
HT - 1112034	M8	× 1.25	150	30	6.2	5.0	8	C	3	2	1,130
HT - 1112038	M10	× 1.25	150	32	7.0	5.5	8	C	3	2	1,340
HT - 1112040	M10	× 1.5	150	32	7.0	5.5	8	C	3	2	1,340
HT - 1112044	M12	× 1.25	150	38	8.5	6.5	9	C	3	2	1,700
HT - 1112046	M12	× 1.5	150	38	8.5	6.5	9	C	3	2	1,700
HT - 1112048	M12	× 1.75	150	38	8.5	6.5	9	C	3	2	1,700


HTD ดอกลูกยาว หลุม สี่เหลี่ยม LT - POT ยาว 150 มม. BSW

รหัสสินค้า	SIZE		L	l	d	K	Kl	Flute	Z	อัน / บาท
HT - 1113001	BSW	1/8 - 40	150	16.0	3.3	2.7	4.5	3	3	1,370
HT - 1113002	BSW	5/32 - 32	150	19.0	4.0	3.1	6.5	3	3	1,350
HT - 1113003	BSW	3/16 - 24	150	22.0	4.8	3.8	6.5	3	3	1,040
HT - 1113004	BSW	1/4 - 20	150	25.0	6.4	5.0	7.0	3	3	960
HT - 1113006	BSW	5/16 - 18	150	28.0	8.0	6.1	10.3	3	3	1,130
HT - 1113008	BSW	3/8 - 16	150	32.0	9.5	7.5	10.3	3	3	1,340
HT - 1113010	BSW	7/16 - 14	150	36.5	8.2	6.1	10.5	3	3	1,700
HT - 1113012	BSW	1/2 - 12	150	42.0	9.3	7.0	11.0	3	3	1,900

Standard taps that can be used in for a variety of applications.

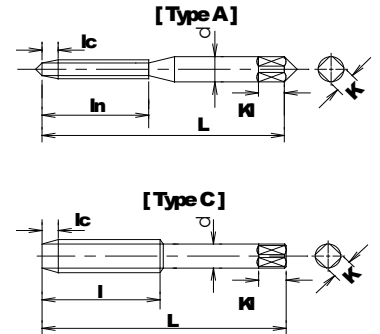
(Chamfer length : Taper (#1) 9 pitches - Plug (#2) 5 pitches

Bottoming (#3) 1.5 pitches / Material : HSS.)



HTD ดอกตลับเกลียวตัวผู้ HSS 3ตัวชุด

รหัสสินค้า	SIZE		L	l	d	K	Kl	Type	Flute	ชุด / บาท
	Dia	Pitch								
HT - 2001010	M2	× 0.45	40	15	3.0	2.5	5	A	3	1,140
HT - 2001011	M2	× 0.4	40	15	3.0	2.5	5	A	3	990
HT - 2001012	M2	× 0.25	40	8	3.0	2.5	5	A	3	1,320
HT - 2001013	M2.2	× 0.45	42	15	3.0	2.5	5	A	3	1,050
HT - 2001014	M2.2	× 0.25	42	8	3.0	2.5	5	A	3	1,350
HT - 2001016	M2.3	× 0.4	42	15	3.0	2.5	5	A	3	960
HT - 2001017	M2.3	× 0.25	42	8	3.0	2.5	5	A	3	1,350
HT - 2001019	M2.5	× 0.45	44	16	3.0	2.5	5	A	3	960
HT - 2001020	M2.5	× 0.35	44	10	3.0	2.5	5	A	3	1,200
HT - 2001022	M2.6	× 0.45	44	16	3.0	2.5	5	A	3	840
HT - 2001023	M2.6	× 0.35	44	10	3.0	2.5	5	A	3	1,080
HT - 2001025	M3	× 0.5	46	18	4.0	3.2	6	A	3	720
HT - 2001026	M3	× 0.6	46	18	4.0	3.2	6	A	3	720
HT - 2001027	M3	× 0.35	46	10	4.0	3.2	6	A	3	900
HT - 2001029	M3.5	× 0.6	48	18	4.0	3.2	6	A	3	750
HT - 2001030	M3.5	× 0.35	48	10	4.0	3.2	6	A	3	1,020
HT - 2001032	M4	× 0.7	52	20	5.0	4.0	7	A	3	690
HT - 2001033	M4	× 0.75	52	20	5.0	4.0	7	A	3	690
HT - 2001034	M4	× 0.5	52	15	5.0	4.0	7	A	3	1,080
HT - 2001036	M4.5	× 0.75	55	20	5.0	4.0	7	A	3	840
HT - 2001037	M4.5	× 0.5	52	15	5.0	4.0	7	A	3	1,020
HT - 2001039	M5	× 0.8	60	22	5.5	4.5	7	A	3	720
HT - 2001040	M5	× 0.9	60	22	5.5	4.5	7	A	3	720
HT - 2001041	M5	× 0.75	60	20	5.5	4.5	7	A	3	840
HT - 2001042	M5	× 0.5	52	15	5.5	4.5	7	A	3	900
HT - 2001044	M5.5	× 0.9	60	22	5.5	4.5	7	A	3	870
HT - 2001046	M6	× 1	62	24	6.0	4.5	7	A	3	780
HT - 2001047	M6	× 0.75	62	20	6.0	4.5	7	A	3	900
HT - 2001048	M6	× 0.5	55	15	6.0	4.5	7	A	3	1,020
HT - 2001050	M7	× 1	65	26	6.2	5.0	8	C	3	900
HT - 2001051	M7	× 0.75	62	20	6.2	5.0	8	C	3	1,080
HT - 2001052	M7	× 0.5	55	15	6.2	5.0	8	C	4	1,140
HT - 2001054	M8	× 1.25	70	30	6.2	5.0	8	C	4	960
HT - 2001055	M8	× 1.5	70	30	6.2	5.0	8	C	4	1,080
HT - 2001056	M8	× 1	70	30	6.2	5.0	8	C	4	1,080
HT - 2001057	M8	× 0.75	62	20	6.2	5.0	8	C	4	1,140
HT - 2001058	M8	× 0.5	55	15	6.2	5.0	8	C	4	1,200
HT - 2001060	M9	× 1.25	72	30	7.0	5.5	8	C	4	1,200
HT - 2001061	M9	× 1.5	72	30	7.0	5.5	8	C	4	1,260
HT - 2001062	M9	× 1	70	30	7.0	5.5	8	C	4	1,260
HT - 2001063	M9	× 0.75	62	20	7.0	5.5	8	C	4	1,440
HT - 2001064	M9	× 0.5	55	15	7.0	5.5	8	C	4	1,500
HT - 2001066	M10	× 1.25	75	32	7.0	5.5	8	C	4	1,260
HT - 2001067	M10	× 1.5	75	32	7.0	5.5	8	C	4	1,200
HT - 2001068	M10	× 1	70	30	7.0	5.5	8	C	4	1,500
HT - 2001069	M10	× 0.75	62	20	7.0	5.5	8	C	4	1,560



Standard taps that can be used in for a variety of applications.

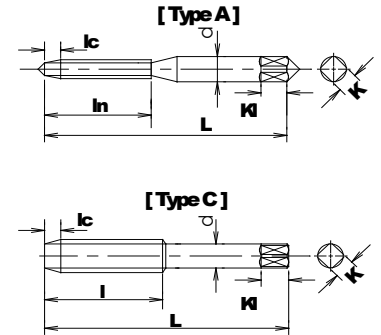
(Chamfer length : Taper (#1) 9 pitches - Plug (#2) 5 pitches

Bottoming (#3) 1.5 pitches / Material : HSS.)



HTD ดอกตลับเกลียวตัวผู้ HSS 3ตัวชุด

รหัสสินค้า	SIZE		L	l	d	K	Kl	Type	Flute	ชุด / บาท
	Dia	Pitch								
HT - 2001071	M11	× 1.5	80	38	8.0	6.0	9	C	4	1,740
HT - 2001072	M11	× 1.25	80	38	8.0	6.0	9	C	4	1,740
HT - 2001073	M11	× 1	70	30	8.0	6.0	9	C	4	2,100
HT - 2001075	M12	× 1.75	82	38	8.5	6.5	9	C	4	1,740
HT - 2001076	M12	× 1.5	82	38	8.5	6.5	9	C	4	1,740
HT - 2001077	M12	× 1.25	80	38	8.5	6.5	9	C	4	1,740
HT - 2001078	M12	× 1	70	30	8.5	6.5	9	C	4	2,100
HT - 2001080	M13	× 1.75	88	42	9.5	7.0	10	C	4	3,000
HT - 2001081	M13	× 1.5	85	42	9.5	7.0	10	C	4	2,700
HT - 2001082	M13	× 1.25	85	42	9.5	7.0	10	C	4	2,700
HT - 2001083	M13	× 1	70	30	9.5	7.0	10	C	4	3,000
HT - 2001085	M14	× 2	88	42	10.5	8.0	11	C	4	2,100
HT - 2001086	M14	× 1.75	88	42	10.5	8.0	11	C	4	2,250
HT - 2001087	M14	× 1.5	88	42	10.5	8.0	11	C	4	2,100
HT - 2001088	M14	× 1.25	88	38	10.5	8.0	11	C	4	2,250
HT - 2001089	M14	× 1	70	30	10.5	8.0	11	C	4	2,400
HT - 2001091	M15	× 2	90	42	10.5	8.0	11	C	3	3,600
HT - 2001092	M15	× 1.5	90	42	10.5	8.0	11	C	4	3,600
HT - 2001093	M15	× 1	70	30	10.5	8.0	11	C	4	3,600
HT - 2001095	M16	× 2	95	45	12.5	10.0	13	C	4	3,000
HT - 2001096	M16	× 1.5	95	45	12.5	10.0	13	C	4	3,000
HT - 2001097	M16	× 1.25	95	45	12.5	10.0	13	C	4	3,150
HT - 2001098	M16	× 1	75	35	12.5	10.0	13	C	4	3,300
HT - 2001100	M17	× 2.0	95	45	13.0	10.0	13	C	4	3,900
HT - 2001101	M17	× 1.5	95	45	13.0	11.0	14	C	4	3,900
HT - 2001103	M18	× 2.5	100	48	14.0	11.0	14	C	4	3,600
HT - 2001104	M18	× 2	95	45	14.0	11.0	14	C	4	3,900
HT - 2001105	M18	× 1.5	95	45	14.0	11.0	14	C	4	3,600
HT - 2001106	M18	× 1	80	30	14.0	11.0	14	C	4	4,200
HT - 2001108	M19	× 2.5	105	50	14.0	11.0	14	C	4	5,100
HT - 2001109	M19	× 2	95	45	14.0	11.0	14	C	4	5,100
HT - 2001110	M19	× 1.5	95	45	14.0	11.0	14	C	4	5,100
HT - 2001112	M20	× 2.5	105	50	15.0	12.0	15	C	4	3,900
HT - 2001113	M20	× 2	95	45	15.0	12.0	15	C	4	4,500
HT - 2001114	M20	× 1.5	95	45	15.0	12.0	15	C	4	3,900
HT - 2001115	M20	× 1	80	30	15.0	12.0	15	C	4	5,400
HT - 2001117	M21	× 2.5	115	55	15.0	12.0	15	C	4	6,600
HT - 2001118	M21	× 1.5	95	45	15.0	12.0	15	C	4	6,600
HT - 2001120	M22	× 2.5	115	55	17.0	13.0	16	C	4	5,400



Standard taps that can be used in for a variety of applications.

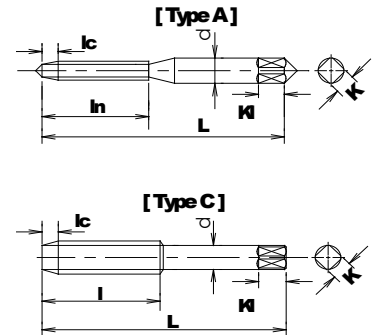
(Chamfer length : Taper (#1) 9 pitches - Plug (#2) 5 pitches

Bottoming (#3) 1.5 pitches / Material : HSS.)



HTD ดอกตลับเกลียวตัวผู้ HSS 3ตัวชุด

รหัสสินค้า	SIZE		L	l	d	K	KI	Type	Flute	ชุด / บาท
	Dia	Pitch								
HT-2001121	M22	x 2	95	45	17.0	13.0	16	C	4	5,700
HT-2001122	M22	x 1.5	95	45	17.0	13.0	16	C	4	5,400
HT-2001124	M24	x 3	120	58	19.0	15.0	18	C	4	6,900
HT-2001125	M24	x 2	95	45	19.0	15.0	18	C	4	7,200
HT-2001126	M24	x 1.5	95	45	19.0	15.0	18	C	4	6,900
HT-2001127	M24	x 1	90	30	19.0	15.0	18	C	4	7,500
HT-2001129	M25	x 3	130	62	19.0	15.0	18	C	4	9,000
HT-2001130	M25	x 2	95	45	19.0	15.0	18	C	4	9,000
HT-2001131	M25	x 1.5	95	45	19.0	15.0	18	C	4	9,000
HT-2001133	M26	x 3	130	62	20.0	15.0	18	C	4	9,000
HT-2001134	M26	x 2	95	45	20.0	15.0	18	C	4	9,000
HT-2001135	M26	x 1.5	95	45	20.0	15.0	18	C	4	9,000
HT-2001137	M27	x 3	130	62	20.0	15.0	18	C	4	9,900
HT-2001138	M27	x 2	95	45	20.0	15.0	18	C	4	9,900
HT-2001139	M27	x 1.5	95	45	20.0	15.0	18	C	4	9,900
HT-2001141	M28	x 3	135	65	21.0	17.0	20	C	4	12,600
HT-2001142	M28	x 2	105	45	21.0	17.0	20	C	4	12,600
HT-2001143	M28	x 1.5	105	45	21.0	17.0	20	C	4	12,600
HT-2001145	M30	x 3.5	135	65	23.0	17.0	20	C	4	12,900
HT-2001146	M30	x 3	135	65	23.0	17.0	20	C	4	13,500
HT-2001147	M30	x 2	105	45	23.0	17.0	20	C	4	13,500
HT-2001148	M30	x 1.5	105	45	23.0	17.0	20	C	4	13,200
order	M32	x 1.5	105	45	24.0	19.0	22	C	4	*
order	M33	x 3.5	145	70	25.0	19.0	22	C	4	*
order	M36	x 4	155	75	28.0	21.0	24	C	4	*
order	M36	x 3	155	75	28.0	21.0	24	C	4	*
order	M36	x 2	110	45	28.0	21.0	24	C	4	*
order	M36	x 1.5	110	45	28.0	21.0	24	C	4	*





Standard taps that can be used in for a variety of applications.

(Chamfer length : Taper (#1) 9 pitches - Plug (#2) 5 pitches

Bottoming (#3) 1.5 pitches / Material : HSS.)



HTD ดอกต๊าปเกลียวตัวผู้ HSS แบบตัวเดียว

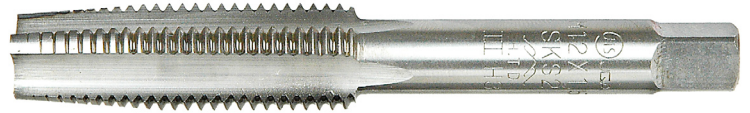
HTD ขนาด	ดอกต๊าปเกลียวตัวผู้ NO. 1		ดอกต๊าปเกลียวตัวผู้ NO. 2		ดอกต๊าปเกลียวตัวผู้ NO. 3	
	รหัสสินค้า	อัน / บาท	รหัสสินค้า	อัน / บาท	รหัสสินค้า	อัน / บาท
M2 × 0.45	HT-2002010	380	HT-2003010	380	HT-2004010	380
M2 × 0.4	HT-2002011	330	HT-2003011	330	HT-2004011	330
M2 × 0.25	HT-2002012	440	HT-2003012	440	HT-2004012	440
M2.2 × 0.45	HT-2002013	350	HT-2003013	350	HT-2004013	350
M2.2 × 0.25	HT-2002014	450	HT-2003014	450	HT-2004014	450
M2.3 × 0.4	HT-2002016	320	HT-2003016	320	HT-2004016	320
M2.3 × 0.25	HT-2002017	450	HT-2003017	450	HT-2004017	450
M2.5 × 0.45	HT-2002019	320	HT-2003019	320	HT-2004019	320
M2.5 × 0.35	HT-2002020	400	HT-2003020	400	HT-2004020	400
M2.6 × 0.45	HT-2002022	280	HT-2003022	280	HT-2004022	280
M2.6 × 0.35	HT-2002023	360	HT-2003023	360	HT-2004023	360
M3 × 0.5	HT-2002025	240	HT-2003025	240	HT-2004025	240
M3 × 0.6	HT-2002026	240	HT-2003026	240	HT-2004026	240
M3 × 0.35	HT-2002027	300	HT-2003027	300	HT-2004027	300
M3.5 × 0.6	HT-2002029	250	HT-2003029	250	HT-2004029	250
M3.5 × 0.35	HT-2002030	340	HT-2003030	340	HT-2004030	340
M4 × 0.7	HT-2002032	230	HT-2003032	230	HT-2004032	230
M4 × 0.75	HT-2002033	230	HT-2003033	230	HT-2004033	230
M4 × 0.5	HT-2002034	360	HT-2003034	360	HT-2004034	360
M4.5 × 0.75	HT-2002036	280	HT-2003036	280	HT-2004036	280
M4.5 × 0.5	HT-2002037	340	HT-2003037	340	HT-2004037	340
M5 × 0.8	HT-2002039	240	HT-2003039	240	HT-2004039	240
M5 × 0.9	HT-2002040	240	HT-2003040	240	HT-2004040	240
M5 × 0.75	HT-2002041	280	HT-2003041	280	HT-2004041	280
M5 × 0.5	HT-2002042	300	HT-2003042	300	HT-2004042	300
M5.5 × 0.9	HT-2002044	290	HT-2003044	290	HT-2004044	290
M6 × 1	HT-2002046	260	HT-2003046	260	HT-2004046	260
M6 × 0.75	HT-2002047	300	HT-2003047	300	HT-2004047	300
M6 × 0.5	HT-2002048	340	HT-2003048	340	HT-2004048	340
M7 × 1	HT-2002050	300	HT-2003050	300	HT-2004050	300
M7 × 0.75	HT-2002051	360	HT-2003051	360	HT-2004051	360
M7 × 0.5	HT-2002052	380	HT-2003052	380	HT-2004052	380
M8 × 1.25	HT-2002054	320	HT-2003054	320	HT-2004054	320
M8 × 1.5	HT-2002055	360	HT-2003055	360	HT-2004055	360
M8 × 1	HT-2002056	360	HT-2003056	360	HT-2004056	360
M8 × 0.75	HT-2002057	380	HT-2003057	380	HT-2004057	380
M8 × 0.5	HT-2002058	400	HT-2003058	400	HT-2004058	400
M9 × 1.25	HT-2002060	400	HT-2003060	400	HT-2004060	400



Standard taps that can be used in for a variety of applications.

(Chamfer length : Taper (#1) 9 pitches - Plug (#2) 5 pitches

Bottoming (#3) 1.5 pitches / Material : HSS.)



HTD ดอกตลับเกลียวตัวผู้ HSS แบบตัวเดียว

HTD ขนาด	ดอกตลับเกลียวตัวผู้ NO. 1		ดอกตลับเกลียวตัวผู้ NO. 2		ดอกตลับเกลียวตัวผู้ NO. 3	
	รหัสสินค้า	อัน / บาท	รหัสสินค้า	อัน / บาท	รหัสสินค้า	อัน / บาท
M9 x 1.5	HT-2002061	420	HT-2003061	420	HT-2004061	420
M9 x 1	HT-2002062	420	HT-2003062	420	HT-2004062	420
M9 x 0.75	HT-2002063	480	HT-2003063	480	HT-2004063	480
M9 x 0.5	HT-2002064	500	HT-2003064	500	HT-2004064	500
M10 x 1.25	HT-2002066	420	HT-2003066	420	HT-2004066	420
M10 x 1.5	HT-2002067	400	HT-2003067	400	HT-2004067	400
M10 x 1	HT-2002068	500	HT-2003068	500	HT-2004068	500
M10 x 0.75	HT-2002069	520	HT-2003069	520	HT-2004069	520
M11 x 1.5	HT-2002071	580	HT-2003071	580	HT-2004071	580
M11 x 1.25	HT-2002072	580	HT-2003072	580	HT-2004072	580
M11 x 1	HT-2002073	700	HT-2003073	700	HT-2004073	700
M12 x 1.75	HT-2002075	580	HT-2003075	580	HT-2004075	580
M12 x 1.5	HT-2002076	580	HT-2003076	580	HT-2004076	580
M12 x 1.25	HT-2002077	580	HT-2003077	580	HT-2004077	580
M12 x 1	HT-2002078	700	HT-2003078	700	HT-2004078	700
M13 x 1.75	HT-2002080	1,000	HT-2003080	1,000	HT-2004080	1,000
M13 x 1.5	HT-2002081	900	HT-2003081	900	HT-2004081	900
M13 x 1.25	HT-2002082	900	HT-2003082	900	HT-2004082	900
M13 x 1	HT-2002083	1,000	HT-2003083	1,000	HT-2004083	1,000
M14 x 2	HT-2002085	700	HT-2003085	700	HT-2004085	700
M14 x 1.75	HT-2002086	750	HT-2003086	750	HT-2004086	750
M14 x 1.5	HT-2002087	700	HT-2003087	700	HT-2004087	700
M14 x 1.25	HT-2002088	750	HT-2003088	750	HT-2004088	750
M14 x 1	HT-2002089	800	HT-2003089	800	HT-2004089	800
M15 x 2	HT-2002091	1,200	HT-2003091	1,200	HT-2004091	1,200
M15 x 1.5	HT-2002092	1,200	HT-2003092	1a,200	HT-2004092	1,200
M15 x 1	HT-2002093	1,200	HT-2003093	1,200	HT-2004093	1,200
M16 x 2	HT-2002095	1,000	HT-2003095	1,000	HT-2004095	1,000
M16 x 1.5	HT-2002096	1,000	HT-2003096	1,000	HT-2004096	1,000
M16 x 1.25	HT-2002097	1,050	HT-2003097	1,050	HT-2004097	1,050
M16 x 1	HT-2002098	1,100	HT-2003098	1,100	HT-2004098	1,100
M17 x 2.0	HT-2002100	1,300	HT-2003100	1,300	HT-2004100	1,300
M17 x 1.5	HT-2002101	1,300	HT-2003101	1,300	HT-2004101	1,300
M18 x 2.5	HT-2002103	1,200	HT-2003103	1,200	HT-2004103	1,200
M18 x 2	HT-2002104	1,300	HT-2003104	1,300	HT-2004104	1,300
M18 x 1.5	HT-2002105	1,200	HT-2003105	1,200	HT-2004105	1,200
M18 x 1	HT-2002106	1,400	HT-2003106	1,400	HT-2004106	1,400
M19 x 2.5	HT-2002108	1,700	HT-2003108	1,700	HT-2004108	1,700
M19 x 2	HT-2002109	1,700	HT-2003109	1,700	HT-2004109	1,700
M19 x 1.5	HT-2002110	1,700	HT-2003110	1,700	HT-2004110	1,700

Standard taps that can be used in for a variety of applications.

(Chamfer length : Taper (#1) 9 pitches - Plug (#2) 5 pitches

Bottoming (#3) 1.5 pitches / Material : HSS.)



HTD ดอกตลับเกลียวตัวผู้ HSS แบบตัวเดียว

HTD ขนาด	ดอกตลับเกลียวตัวผู้ NO. 1		ดอกตลับเกลียวตัวผู้ NO. 2		ดอกตลับเกลียวตัวผู้ NO. 3	
	รหัสสินค้า	อัน / บาท	รหัสสินค้า	อัน / บาท	รหัสสินค้า	อัน / บาท
M20 x 2.5	HT-2002112	1,300	HT-2003112	1,300	HT-2004112	1,300
M20 x 2	HT-2002113	1,500	HT-2003113	1,500	HT-2004113	1,500
M20 x 1.5	HT-2002114	1,300	HT-2003114	1,300	HT-2004114	1,300
M20 x 1	HT-2002115	1,800	HT-2003115	1,800	HT-2004115	1,800
M21 x 2.5	HT-2002117	2,200	HT-2003117	2,200	HT-2004117	2,200
M21 x 1.5	HT-2002118	2,200	HT-2003118	2,200	HT-2004118	2,200
M22 x 2.5	HT-2002120	1,800	HT-2003120	1,800	HT-2004120	1,800
M22 x 2	HT-2002121	1,900	HT-2003121	1,900	HT-2004121	1,900
M22 x 1.5	HT-2002122	1,800	HT-2003122	1,800	HT-2004122	1,800
M24 x 3	HT-2002124	2,300	HT-2003124	2,300	HT-2004124	2,300
M24 x 2	HT-2002125	2,400	HT-2003125	2,400	HT-2004125	2,400
M24 x 1.5	HT-2002126	2,300	HT-2003126	2,300	HT-2004126	2,300
M24 x 1	HT-2002127	2,500	HT-2003127	2,500	HT-2004127	2,500
M25 x 3	HT-2002129	3,000	HT-2003129	3,000	HT-2004129	3,000
M25 x 2	HT-2002130	3,000	HT-2003130	3,000	HT-2004130	3,000
M25 x 1.5	HT-2002131	3,000	HT-2003131	3,000	HT-2004131	3,000
M26 x 3	HT-2002133	3,000	HT-2003133	3,000	HT-2004133	3,000
M26 x 2	HT-2002134	3,000	HT-2003134	3,000	HT-2004134	3,000
M26 x 1.5	HT-2002135	3,000	HT-2003135	3,000	HT-2004135	3,000
M27 x 3	HT-2002137	3,300	HT-2003137	3,300	HT-2004137	3,300
M27 x 2	HT-2002138	3,300	HT-2003138	3,300	HT-2004138	3,300
M27 x 1.5	HT-2002139	3,300	HT-2003139	3,300	HT-2004139	3,300
M28 x 3	HT-2002141	4,200	HT-2003141	4,200	HT-2004141	4,200
M28 x 2	HT-2002142	4,200	HT-2003142	4,200	HT-2004142	4,200
M28 x 1.5	HT-2002143	4,200	HT-2003143	4,200	HT-2004143	4,200
M30 x 3.5	HT-2002145	4,300	HT-2003145	4,300	HT-2004145	4,300
M30 x 3	HT-2002146	4,500	HT-2003146	4,500	HT-2004146	4,500
M30 x 2	HT-2002147	4,500	HT-2003147	4,500	HT-2004147	4,500
M30 x 1.5	HT-2002148	4,400	HT-2003148	4,400	HT-2004148	4,400
M32 x 1.5	HT-2002150	6,600	HT-2003150	6,600	HT-2004150	6,600
M33 x 3.5	HT-2002152	6,600	HT-2003152	6,600	HT-2004152	6,600
M36 x 4	HT-2002154	7,500	HT-2003154	7,500	HT-2004154	7,500
M36 x 3	HT-2002155	7,500	HT-2003155	7,500	HT-2004155	7,500
M36 x 2	HT-2002156	7,500	HT-2003156	7,500	HT-2004156	7,500
M36 x 1.5	HT-2002157	7,500	HT-2003157	7,500	HT-2004157	7,500

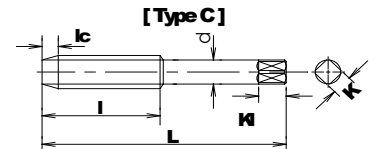
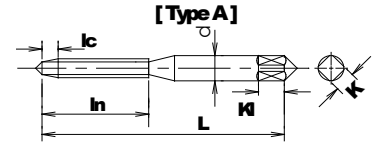
Standard taps that can be used in for a variety of applications.

(Chamfer length : Taper (#1) 9 pitches - Plug (#2) 5 pitches

Bottoming (#3) 1.5 pitches / Material : HSS.)


HTD ดอกต๊าปเกลียวตัวผู้ HSS 3ตัวชุด

รหัสสินค้า	SIZE		L	l	d	K	Kl	F	JC	ชุด / บาท
	Dia	Pitch								
HT-2101002	W3/32	- 48	40	9.0	3.0	2.5	5.0	-	-	1,080
HT-2101003	W1/8	- 40	46	18.0	4.0	3.2	6.0	3	2	780
HT-2101004	W5/32	- 32	52	20.0	5.0	4.0	7.0	3	2	780
HT-2101005	W3/16	- 24	60	22.0	5.5	4.5	7.0	3	2	780
HT-2101006	W7/32	- 24	60	22.0	5.5	4.5	7.0	3	2	900
HT-2101007	W1/4	- 20	62	24.0	6.0	4.5	7.0	3	2	840
HT-2101009	W5/16	- 18	70	30.0	6.1	5.0	8.0	4	2	1,020
HT-2101010	W3/8	- 16	75	35.0	7.0	5.5	8.0	4	2	1,200
HT-2101011	W7/16	- 14	80	38.0	8.0	6.0	9.0	4	2	1,560
HT-2101012	W1/2	- 12	85	42.0	9.0	7.0	10.0	4	2	1,980
HT-2101013	W9/16	- 12	90	42.0	10.5	8.0	11.0	4	2	2,640
HT-2101014	W5/8	- 11	95	45.0	12.0	9.0	12.0	4	2	3,000
HT-2101015	W11/16	- 11	100	45.0	13.0	10.0	13.0	4	2	5,400
HT-2101016	W3/4	- 10	105	50.0	14.0	11.0	14.0	4	2	4,800
HT-2101018	W7/8	- 9	115	55.0	17.0	13.0	16.0	4	2	6,300
HT-2101020	W1"	- 8	125	60.0	20.0	15.0	18.0	4	2	8,400
HT-2101021	W1"1/8	- 7	135	65.0	22.0	17.0	20.0	4	2	*
HT-2101022	W1"1/4	- 7	145	70.0	24.0	19.0	22.0	4	2	*
HT-2101023	W1"3/8	- 6	155	75.0	26.0	21.0	24.0	4	2	*
HT-2101024	W1"1/2	- 6	160	78.0	30.0	23.0	26.0	4	2	*





Standard taps that can be used in for a variety of applications.

(Chamfer length : Taper (#1) 9 pitches - Plug (#2) 5 pitches

Bottoming (#3) 1.5 pitches / Material : HSS.)

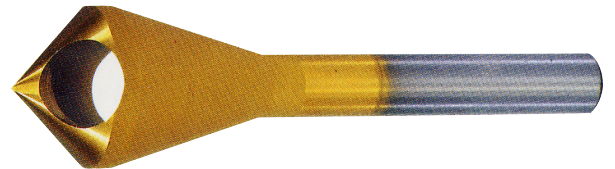
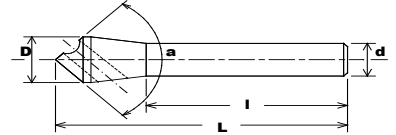


HTD ดอกตลับเกลียวตัวผู้ HSS แบบตัวเดียว

HTD ขนาด	ดอกตลับเกลียวตัวผู้ NO. 1		ดอกตลับเกลียวตัวผู้ NO. 2		ดอกตลับเกลียวตัวผู้ NO. 3	
	รหัสสินค้า	อัน / บาท	รหัสสินค้า	อัน / บาท	รหัสสินค้า	อัน / บาท
W3/32 - 48	HT-2102002	360	HT-2103002	360	HT-2104002	360
W1/8 - 40	HT-2102003	260	HT-2103003	260	HT-2104003	260
W5/32 - 32	HT-2102004	260	HT-2103004	260	HT-2104004	260
W3/16 - 24	HT-2102005	260	HT-2103005	260	HT-2104005	260
W7/32 - 24	HT-2102006	300	HT-2103006	300	HT-2104006	300
W1/4 - 20	HT-2102007	280	HT-2103007	280	HT-2104007	280
W5/16 - 18	HT-2102009	340	HT-2103009	340	HT-2104009	340
W3/8 - 16	HT-2102010	400	HT-2103010	400	HT-2104010	400
W7/16 - 14	HT-2102011	520	HT-2103011	520	HT-2104011	520
W1/2 - 12	HT-2102012	660	HT-2103012	660	HT-2104012	660
W9/16 - 12	HT-2102013	880	HT-2103013	880	HT-2104013	880
W5/8 - 11	HT-2102014	1,000	HT-2103014	1,000	HT-2104014	1,000
W11/16 - 11	HT-2102015	1,800	HT-2103015	1,800	HT-2104015	1,800
W3/4 - 10	HT-2102016	1,600	HT-2103016	1,600	HT-2104016	1,600
W7/8 - 9	HT-2102018	2,100	HT-2103018	2,100	HT-2104018	2,100
W1" - 8	HT-2102020	2,800	HT-2103020	2,800	HT-2104020	2,800
W1"1/8 - 7	HT-2102021	4,800	HT-2103021	4,800	HT-2104021	4,800
W1"1/4 - 7	HT-2102022	5,800	HT-2103022	5,800	HT-2104022	5,800
W1"3/8 - 6	HT-2102023	7,800	HT-2103023	7,800	HT-2104023	7,800
W1"1/2 - 6	HT-2102024	9,200	HT-2103024	9,200	HT-2104024	9,200


HTD ดอกคว้านหัวเตเปอร์ HSS รุ่น CDI - 90 องศา

รหัสสินค้า	SIZE			C	D	d	L	l	90°	อัน / บาท
HT-3001004	04	ST	4	2-3	4	4	50.0	-	O	350
HT-3001006	06	ST	6	3-5	6	6	50.0	-	O	400
HT-3001008	08	ST	8	4-7	8	8	50.0	-	O	430
HT-3001009	09	ST	6	4-9	10	6	55.0	42.0	O	500
HT-3001014	14	ST	8	6-14	15	8	70.0	50.0	O	780
HT-3001018	18	ST	10	8-18	20	10	100.0	70.0	O	1,360
HT-3001023	23	ST	12	10-23	25	12	110.0	73.0	O	2,000
HT-3001028	28	ST	12	12-28	30	12	120.0	70.0	O	2,760
HT-3001033	33	ST	12	14-33	35	12	135.0	80.5	O	*
HT-3001040	40	ST	12	20-38	40	12	140.0	66.0	O	*
HT-3001050	50	ST	16	20-48	50	16	140.0	59.0	O	*

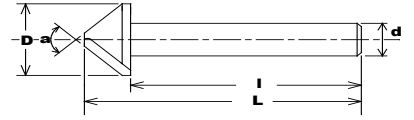

HTD ดอกคว้านหัวเตเปอร์ HSS สีทอง รุ่น CDI - 90 องศา TIN

รหัสสินค้า	SIZE			C	D	d	L	l	90°	อัน / บาท
HT-3002004	04	ST	4	2-3	4	4	50.0	-	O	530
HT-3002006	06	ST	6	3-5	6	6	50.0	-	O	690
HT-3002008	08	ST	8	4-7	8	8	50.0	-	O	730
HT-3002009	09	ST	6	4-9	10	6	55.0	42.0	O	780
HT-3002014	14	ST	8	6-14	15	8	70.0	50.0	O	1,540
HT-3002018	18	ST	10	8-18	20	10	100.0	70.0	O	2,200
HT-3002023	23	ST	12	10-23	25	12	110.0	73.0	O	3,280
HT-3002028	28	ST	12	12-28	30	12	120.0	70.0	O	4,100
HT-3002033	33	ST	12	14-33	35	12	135.0	80.5	O	*
HT-3002040	40	ST	12	20-38	40	12	140.0	66.0	O	*
HT-3002050	50	ST	16	20-48	50	16	140.0	59.0	O	*



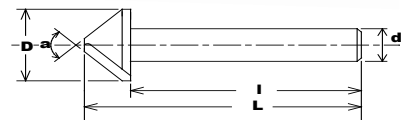
HTD ดอกคว้านหัวเตเปอร์ HSS 1 ฟัน รุ่น CDII - 90 องศา

รหัสสินค้า	SIZE			C	D	d	L	l	90°	อัน / บาท
HT-3101007	07	ST	8	2-7	8	8	55.0	-	O	580
HT-3101015	15	ST	8	3-15	16	8	65.0	50.0	O	980
HT-3101025	25	ST	10	6-25	26	10	80.0	65.0	O	2,540
HT-3101035	35	ST	12	11-35	36	12	90.0	74.0	O	4,730
HT-3101045	45	ST	12	16-45	46	12	95.0	76.0	O	6,540
HT-3101050	50	ST	16	12-48	50	16	100.0	75.0	O	10,500



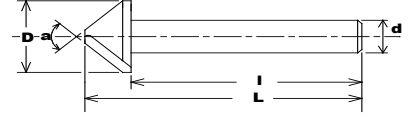
HTD ดอกคว้านหัวเตเปอร์ HSS 1 ฟัน รุ่น CDII - 60 องศา

รหัสสินค้า	SIZE			C	D	d	L	l	60°	อัน / บาท
HT-3102007	07	ST	8	2-7	8	8	55.0	-	O	640
HT-3102015	15	ST	8	3-15	16	8	65.0	50.0	O	1,070
HT-3102025	25	ST	10	6-25	26	10	80.0	65.0	O	2,880
HT-3102035	35	ST	12	11-35	36	12	90.0	74.0	O	5,900
HT-3102045	45	ST	12	16-45	46	12	95.0	76.0	O	8,180
HT-3102050	50	ST	16	12-48	50	16	100.0	75.0	O	*

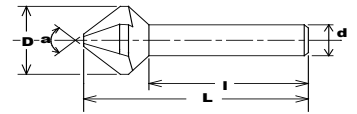



HTD ดอกคว้านหัวเตเปอร์ HSS สีทอง 1 ฟัน รุ่น CDII - 90

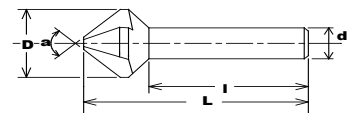
รหัสสินค้า	SIZE			C	D	d	L	I	90°	อัน / บาท
HT-3103007	07	ST	8	2-7	8	8	55.0	-	O	900
HT-3103015	15	ST	8	3-15	16	8	65.0	50.0	O	1,740
HT-3103025	25	ST	10	6-25	26	10	80.0	65.0	O	4,100
HT-3103035	35	ST	12	11-35	36	12	90.0	74.0	O	7,200
HT-3103045	45	ST	12	16-45	46	12	95.0	76.0	O	11,000
HT-3103050	50	ST	16	12-48	50	16	100.0	75.0	O	*


HTD ดอกคว้านหัวเตเปอร์ HSS 3 ฟัน รุ่น CDIII - 90 องศา

รหัสสินค้า	SIZE			C	D	d	L	I	90°	อัน / บาท
HT-3104007	07	ST	8	2-7	8	8	55.0	-	O	780
HT-3104015	15	ST	8	3-15	16	8	65.0	50.0	O	1,180
HT-3104025	25	ST	10	6-25	26	10	80.0	65.0	O	2,860
HT-3104035	35	ST	12	11-35	36	12	90.0	74.0	O	5,460
HT-3104045	45	ST	12	16-45	46	12	95.0	76.0	O	7,600


HTD ดอกคว้านหัวเตเปอร์ HSS 3 ฟัน สีทอง รุ่น CDIII - 90 องศา TIN

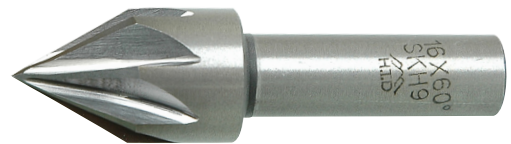
รหัสสินค้า	SIZE			C	D	d	L	I	90°	อัน / บาท
HT-3105007	07	ST	8	2-7	8	8	55.0	-	O	1,080
HT-3105015	15	ST	8	3-15	16	8	65.0	50.0	O	1,920
HT-3105025	25	ST	10	6-25	26	10	80.0	65.0	O	4,400
HT-3105035	35	ST	12	11-35	36	12	90.0	74.0	O	8,200
HT-3105045	45	ST	12	16-45	46	12	95.0	76.0	O	12,300





HTD ดอกคว้านหัวเตเปอร์ HSS รุ่น CR - 90

รหัสสินค้า						90°	อื่น / บาท
HT-3201006	6	6	44	7.0	-	○	350
HT-3201008	8	6	47	7.0	-	○	400
HT-3201010	10	6	48	7.0	-	○	620
HT-3201012	12	8	50	7.0	-	○	690
HT-3201016	16	10	52	7.0	-	○	870
HT-3201020	20	10	56	7.0	-	○	1,000
HT-3201025	25	12	62	9.0	-	○	1,440
HT-3201030	30	12	62	9.0	-	○	1,700
HT-3201035	35	12	70	9.0	3.5	○	2,800
HT-3201040	40	12	73	11.0	6.0	○	3,750
HT-3201045	45	12	83	11.0	6.0	○	*
HT-3201050	50	12	84	13.0	6.0	○	*
HT-3201060	60	12.7	95	13.0	6.0	○	*



HTD ดอกคว้านหัวเตเปอร์ HSS รุ่น CR - 60

รหัสสินค้า						60°	อื่น / บาท
HT-3202006	6	6	45	7.0	-	○	370
HT-3202008	8	6	50	7.0	-	○	420
HT-3202010	10	6	52	7.0	-	○	640
HT-3202012	12	8	54	7.0	-	○	710
HT-3202016	16	10	58	7.0	-	○	900
HT-3202020	20	10	62	7.0	-	○	1,030
HT-3202025	25	12	64	9.0	-	○	1,480
HT-3202030	30	12	69	9.0	-	○	1,880
HT-3202035	35	12	79	9.0	3.5	○	3,450
HT-3202040	40	12	81	11.0	6.0	○	4,400
HT-3202045	45	12	96	11.0	6.0	○	*
HT-3202050	50	12	98	13.0	6.0	○	*
HT-3202060	60	12.7	113	13.0	6.0	○	*

Standard taps that can be used in for a variety of applications.

(Chamfer length : Taper (#1) 9pitches Plug (#2) 5pitches

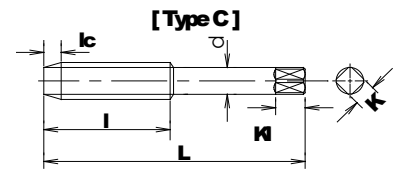
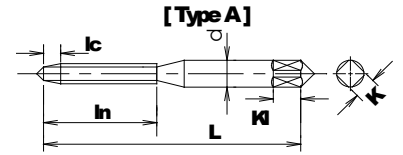
Bottoming (#3) 1.5pitches / Materials : HSS.)

SKS HAND TAP (JIS Class3) Symbol SKS HT



ดอกตลับเกลียวตัวผู้ SKS 3ตัวชุด

รหัสสินค้า	SIZE		L	l	d	K	Kl	Type	F	บรรจุ	ชุด / บาท
	Dia	Pitch									
HT - 4001007	M2	x 0.4	40	15	3.0	2.5	5	A	3		280
HT - 4001008	M2.2	x 0.45	40	15	3.0	2.5	5	A	3		300
HT - 4001009	M2.3	x 0.4	42	15	3.0	2.5	5	A	3		300
HT - 4001010	M2.5	x 0.45	44	16	3.0	2.5	5	A	3		280
HT - 4001011	M2.6	x 0.45	44	16	3.0	2.5	5	A	3	10	280
HT - 4001012	M3	x 0.5	46	18	4.0	3.2	6	A	3		240
HT - 4001013	M3	x 0.6	46	18	4.0	3.2	6	A	3		240
HT - 4001014	M3.5	x 0.6	48	18	4.0	3.2	6	A	3		244
HT - 4001016	M4	x 0.7	52	20	5.0	4.0	7	A	3		236
HT - 4001017	M4	x 0.75	52	20	5.0	4.0	7	A	3		236
HT - 4001018	M4.5	x 0.75	55	20	5.0	4.0	7	A	3		280
HT - 4001021	M5	x 0.8	60	22	5.5	4.5	7	A	3		240
HT - 4001022	M5	x 0.9	60	22	5.5	4.5	7	A	3		240
HT - 4001023	M5.5	x 0.75	60	22	5.5	4.5	7	A	3		340
HT - 4001024	M5.5	x 0.9	60	22	5.5	4.5	7	A	3	10	284
HT - 4001025	M6	x 1	62	24	6.0	4.5	7	A	3		280
HT - 4001026	M6	x 0.75	62	20	6.0	4.5	7	A	3		320
HT - 4001028	M7	x 1	65	26	6.2	5.0	8	C	3		360
HT - 4001030	M7	x 0.75	62	20	6.2	5.0	8	C	3		480
HT - 4001031	M8	x 1.25	70	30	6.2	5.0	8	C	4		420
HT - 4001032	M8	x 1	70	30	6.2	5.0	8	C	4		510
HT - 4001033	M8	x 0.75	62	20	6.2	5.0	8	C	4		510
HT - 4001035	M9	x 1.25	72	30	7.0	5.5	8	C	4		540
HT - 4001036	M9	x 1	70	30	7.0	5.5	8	C	4		570
HT - 4001038	M10	x 1.5	75	32	7.0	5.5	8	C	4		500
HT - 4001039	M10	x 1.25	75	3	7.0	5.5	8	C	4	10	500
HT - 4001040	M10	x 1	70	30	7.0	5.5	8	C	4		640
HT - 4001043	M11	x 1.5	80	38	8.0	6.0	9	C	4		740
HT - 4001044	M11	x 1.25	80	38	8.0	6.0	9	C	4		760
HT - 4001047	M12	x 1.75	82	38	8.5	6.5	9	C	4		720
HT - 4001048	M12	x 1.5	82	38	8.5	6.5	9	C	4	10	720
HT - 4001049	M12	x 1.25	80	38	8.5	6.5	9	C	4	10	760
HT - 4001050	M12	x 1	70	30	8.5	6.5	9	C	4	10	900
HT - 4001053	M13	x 1.75	88	42	9.5	7.0	10	C	4	3	1,200
HT - 4001054	M13	x 1.5	85	42	9.5	7.0	10	C	4	3	1,100
HT - 4001056	M14	x 2	88	42	10.5	8.0	11	C	4	3	900
HT - 4001057	M14	x 1.5	88	42	10.5	8.0	11	C	4	3	900
HT - 4001058	M14	x 1.25	88	38	10.5	8.0	11	C	4	3	920
HT - 4001059	M14	x 1	70	30	10.5	8.0	11	C	4	3	1,200



Standard taps that can be used in for a variety of applications.

(Chamfer length : Taper (#1) 9pitches Plug (#2) 5pitches

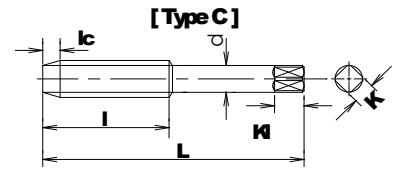
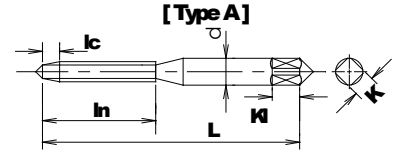
Bottoming (#3) 1.5pitches / Materials : HSS.)

SKS HAND TAP (JIS Class3) Symbol SKS HT



ดอกตลับเกลียวตัวผู้ SKS 3ตัวชุด

รหัสสินค้า	SIZE		L	l	d	K	Kl	Type	F	บรรจุ	ชุด / บาท
	Dia	Pitch									
HT - 4001062	M15	x 2	90	42	10.5	8.0	11	C	4	3	1,600
HT - 4001063	M15	x 1.5	90	42	10.5	8.0	11	C	4		1,600
HT - 4001065	M16	x 2	95	45	12.5	10.0	13	C	4		1,150
HT - 4001066	M16	x 1.5	95	45	12.5	10.0	13	C	4		1,180
HT - 4001068	M16	x 1	75	35	12.5	10.0	13	C	4		1,330
HT - 4001071	M18	x 2.5	100	48	14.0	11.0	14	C	4		1,500
HT - 4001072	M18	x 2	95	45	14.0	11.0	14	C	4		1,600
HT - 4001073	M18	x 1.5	95	45	14.0	11.0	14	C	4		1,520
HT - 4001074	M18	x 1	80	30	14.0	11.0	14	C	4		1,900
HT - 4001079	M20	x 2.5	105	50	15.0	12.0	15	C	4	1,800	
HT - 4001080	M20	x 2	95	45	15.0	12.0	15	C	4	3	2,000
HT - 4001081	M20	x 1.5	95	45	15.0	12.0	15	C	4		1,800
HT - 4001083	M22	x 2.5	115	55	17.0	13.0	16	C	4		2,200
HT - 4001084	M22	x 2	95	45	17.0	13.0	16	C	4		2,400
HT - 4001085	M22	x 1.5	95	45	17.0	13.0	16	C	4		2,200
HT - 4001087	M24	x 3	120	58	19.0	15.0	18	C	4		2,600
HT - 4001088	M24	x 2	95	45	19.0	15.0	18	C	4		2,900
HT - 4001089	M24	x 1.5	95	45	19.0	15.0	18	C	4		2,600
HT - 4001091	M25	x 3	130	62	19.0	15.0	18	C	4		3,600
HT - 4001092	M25	x 2	95	45	19.0	15.0	18	C	4	3,600	
HT - 4001093	M25	x 1.5	95	45	19.0	15.0	18	C	4	3	3,600
HT - 4001095	M26	x 3	130	62	20.0	15.0	18	C	4		3,800
HT - 4001096	M26	x 2	95	45	20.0	15.0	18	C	4		4,200
HT - 4001097	M26	x 1.5	95	45	20.0	15.0	18	C	4		3,800
HT - 4001099	M27	x 3	130	62	20.0	15.0	18	C	4		4,500
HT - 4001100	M27	x 2	95	45	20.0	15.0	18	C	4		5,000
HT - 4001101	M27	x 1.5	95	45	20.0	15.0	18	C	4		4,800
HT - 4001103	M28	x 3	135	65	21.0	17.0	20	C	4		5,000
HT - 4001104	M28	x 2	105	45	21.0	17.0	20	C	4		5,500
HT - 4001105	M28	x 1.5	105	45	21.0	17.0	20	C	4	5,000	
HT - 4001107	M30	x 3.5	135	65	23.0	17.0	20	C	4	3	5,500
HT - 4001108	M30	x 3	135	65	23.0	17.0	20	C	4		5,500
HT - 4001109	M30	x 2.5	130	62	23.0	17.0	20	C	4		6,000
HT - 4001110	M30	x 2	105	45	23.0	17.0	20	C	4		6,000
HT - 4001111	M30	x1.5	105	45	23.0	17.0	20	C	4		5,500





ดอกตลับเกลียวตัวผู้ SKS 3ตัวชุด HTD W (Whitworth)

รหัสสินค้า	SIZE		L	l	d	K	Kl	HT		บรรจุ	ชุด / บาท
								SKS2			
	Dia	Pitch						F	C		
HT - 4002003	W1/8	- 40	46	18.0	4.0	3.2	6.0	3	3		230
HT - 4002004	W5/32	- 32	52	20.0	5.0	4.0	7.0	3	3		234
HT - 4002005	W3/16	- 24	60	22.0	5.5	4.5	7.0	3	3		240
HT - 4002007	W1/4	- 20	62	24.0	6.0	4.5	7.0	3	3		280
HT - 4002008	W5/16	- 18	70	30.0	6.1	5.0	8.0	4	3		380
HT - 4002009	W3/8	- 16	75	35.0	7.0	5.5	8.0	4	3		460
HT - 4002010	W7/16	- 14	80	38.0	8.0	6.0	9.0	4	3		560
HT - 4002011	W1/2	- 12	85	42.0	9.0	7.0	10.0	4	3		700
HT - 4002012	W9/16	- 12	90	42.0	10.5	8.0	11.0	4	3		920
HT - 4002013	W5/8	- 11	95	45.0	12.0	9.0	12.0	4	3		1,000
HT - 4002014	W3/4	- 10	105	50.0	14.0	11	14.0	4	3		1,360
HT - 4002016	W7/8	- 9	115	55.0	17.0	13	16.0	4	3		1,840
HT - 4002018	W1"	- 8	125	60.0	20.0	15	18.0	4	3		2,500
HT - 4002019	W1"1/8	- 7	135	65.0	22.0	17	20.0	4	3		3,200
HT - 4002020	W1"1/4	- 7	145	70.0	24.0	19	22.0	4	3		4,700
HT - 4002021	W1"3/8	- 6	155	75.0	26.0	21	24.0	4	3		6,100
HT - 4002022	W1"1/2	- 6	160	78.0	30.0	23	26.0	4	3		7,000

Fig-J1 : ~1/4

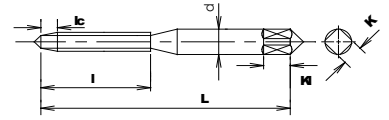
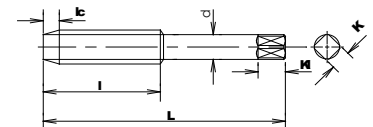


Fig-J2 : 5/16~



F : จำนวนฟัน (Number of flutes)
 HL : Hayasaka original thread limit
 JC : JIS(JIS class of the thread limit)
 Z : Zone



Standard taps that can be used in for a variety of applications.

(Chamfer length : Taper (#1) 9pitches Plug (#2) 5pitches

Bottoming (#3) 1.5pitches / Materials : HSS.)

SKS HAND TAP (JIS Class3) Symbol SKS HT



ดอกตลับเกลียวตัวผู้ SKS 3ตัวชุด

รหัสสินค้า	SIZE		L	l	d	K	Kl	HT		บรรจุ	ชุด / บาท
	UNC							SKS2			
								F	C		
HT-4004001	1/4	- 20	62	24	6.0	4.5	7.0	3	3	10	300
HT-4004002	5/16	- 18	70	30	6.1	5.0	8.0	4	3		400
HT-4004003	3/8	- 16	75	35	7.0	5.5	8.0	4	3		490
HT-4004004	7/16	- 14	80	38	8.0	6	9.0	4	3		580
HT-4004005	1/2	- 13	85	42	9.0	7	10.0	4	3		740
HT-4004006	9/16	- 12	90	42	10.5	8	11.0	4	3		960
HT-4004007	5/8	- 11	95	45	12.0	9	12.0	4	2	1	1,040
HT-4004008	3/4	- 10	105	50	14.0	11	14.0	4	2		1,450
HT-4004009	7/8	- 9	115	55	17.0	13	16.0	4	2		1,900
HT-4004010	1"	- 8	125	60	20.0	15	18.0	4	2		2,600
HT-4004011	1 1/8"	- 7	135	65	22.0	17	20.0	4	2		3,400
HT-4004012	1 1/4"	- 7	145	70	24.0	19	22.0	4	2		5,000
HT-4004013	1 3/8"	- 6	155	75	26.0	21	24.0	4	2		7,000
HT-4004014	1 1/2"	- 6	160	78	30.0	23	26.0	4	2		8,400

Fig-J2 : ~1/4

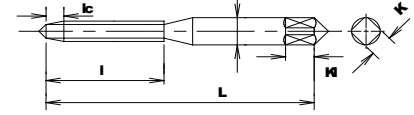
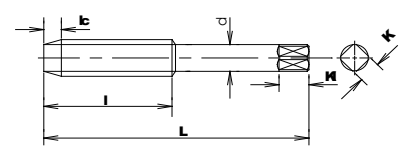


Fig-J2 : 5/16~



ดอกตลับเกลียวตัวผู้ SKS 3ตัวชุด

รหัสสินค้า	SIZE		L	l	d	K	Kl	HT		บรรจุ	ชุด / บาท
	UNF							SKS2			
								F	C		
HT-4006001	1/4	- 28	62	24	6.0	4.5	7.0	3	3	10	285
HT-4006002	5/16	- 24	70	30	6.1	5.0	8.0	4	3		390
HT-4006003	3/8	- 24	75	35	7.0	5.5	8.0	4	3		460
HT-4006004	7/16	- 20	80	38	8.0	6	9.0	4	3		560
HT-4006005	1/2	- 20	85	42	9.0	7	10.0	4	3		700
HT-4006006	9/16	- 18	90	42	10.5	8	11.0	4	3		920
HT-4006007	5/8	- 18	95	45	12.0	9	12.0	4	2	1	1,000
HT-4006008	3/4	- 16	105	50	14.0	11	14.0	4	2		1,360
HT-4006009	7/8	- 14	115	55	17.0	13	16.0	4	2		1,840
HT-4006010	1"	- 12	125	60	20.0	15	18.0	4	2		2,500
HT-4006011	1 1/8"	- 12	135	65	22.0	17	20.0	4	2		3,400
HT-4006012	1 1/4"	- 12	145	70	24.0	19	22.0	4	2		4,800
HT-4006013	1 3/8"	- 12	155	75	26.0	21	24.0	4	2		7,000
HT-4006014	1 1/2"	- 12	160	78	30.0	23	26.0	4	2		8,000

ลูกตาปกกลม SKS MM

รหัสสินค้า	วง (MM)	ขนาด (MM)	ลูก / บาท
HT-5001012	25	3 x 0.5	420
HT-5001013	25	3 x 0.6	420
HT-5001014	25	3.5 x 0.6	420
HT-5001016	25	4 x 0.7	420
HT-5001017	25	4 x 0.75	420
HT-5001021	25	5 x 0.8	420
HT-5001022	25	5 x 0.9	420
HT-5001025	25	6 x 1.0	420
HT-5001026	25	6 x 0.75	420
HT-5001028	25	7 x 1.0	420
HT-5001031	25	8 x 1.25	420
HT-5001032	25	8 x 1.0	420
HT-5001033	25	8 x 0.75	520
HT-5001035	25	9 x 1.25	420
HT-5001036	25	9 x 1.0	420
HT-5001038	25	10 x 1.5	420
HT-5001039	25	10 x 1.25	420
HT-5001040	25	10 x 1.0	420
HT-5001043	38	11 x 1.5	800
HT-5001044	38	11 x 1.25	800
HT-5001047	38	12 x 1.75	620
HT-5001048	38	12 x 1.5	620
HT-5001049	38	12 x 1.25	620
HT-5001050	38	12 x 1.0	800
HT-5001053	38	13 x 1.75	880
HT-5001054	38	13 x 1.5	620
HT-5001056	38	14 x 2.0	620
HT-5001057	38	14 x 1.5	620
HT-5001058	38	14 x 1.25	620
HT-5001059	38	14 x 1.0	880
HT-5001065	38	16 x 2.0	620
HT-5001066	38	16 x 1.5	620
HT-5001071	38	18 x 2.5	620
HT-5001073	38	18 x 1.5	620
HT-5001079	38	20 x 2.5	620
HT-5001081	38	20 x 1.5	620
HT-5001083	50	22 x 2.5	930
HT-5001085	50	22 x 1.5	930
HT-5001087	50	24 x 3.0	930
HT-5001088	50	24 x 2.0	1,180
HT-5001089	50	24 x 1.5	930



ลูกตาปกกลม SKS W

รหัสสินค้า	วง (MM)	ขนาด	ลูก / บาท
HT-5002003	25	W 1/8"	420
HT-5002004	25	W 5/32"	420
HT-5002005	25	W 3/16"	420
HT-5002007	25	W 1/4"	420
HT-5002008	25	W 5/16"	420
HT-5002009	25	W 3/8"	420
HT-5002023	38	W 3/8"	620
HT-5002010	38	W 7/16"	620
HT-5002011	38	W 1/2"	620
HT-5002012	38	W 9/16"	620
HT-5002013	38	W 5/8"	620
HT-5002014	38	W 3/4"	620
HT-5002016	50	W 7/8"	930
HT-5002018	50	W 1"	930

ลูกตาปกกลม SKS UNF

รหัสสินค้า	วง (MM)	ขนาด	ลูก / บาท
HT-5003007	25	UNF 1/4" -28	420
HT-5003008	25	UNF 5/16" -24	420
HT-5003009	25	UNF 3/8" -24	420
HT-5003010	38	UNF 7/16" -20	620
HT-5003011	38	UNF 1/2" -20	620
HT-5003012	38	UNF 9/16" -18	620
HT-5003013	38	UNF 5/8" -18	620
HT-5003014	38	UNF 3/4" -16	620
HT-5003016	50	UNF 7/8" -14	930
HT-5003018	50	UNF 1" -12	930

ลูกต๋ำปกลม SKS เกลียวทลู่ (POT) MM

รหัสสินค๋ำ	วง (MM)	ขนาด (MM)	ลู่ก / ปท
HT-5101012	25	3 x 0.5	500
HT-5101016	25	4 x 0.7	500
HT-5101021	25	5 x 0.8	500
HT-5101025	25	6 x 1.0	500
HT-5101028	25	7 x 1.0	500
HT-5101031	25	8 x 1.25	500
HT-5101032	25	8 x 1.0	500
HT-5101038	25	10 x 1.5	500
HT-5101039	25	10 x 1.25	500
HT-5101040	25	10 x 1.0	500
HT-5101047	38	12 x 1.75	760
HT-5101048	38	12 x 1.5	760
HT-5101049	38	12 x 1.25	760
HT-5101056	38	14 x 2.0	760
HT-5101057	38	14 x 1.5	760
HT-5101058	38	14 x 1.25	760
HT-5101065	38	16 x 2.0	760
HT-5101066	38	16 x 1.5	760
HT-5101071	38	18 x 2.5	760
HT-5101073	38	18 x 1.5	760
HT-5101079	38	20 x 2.5	760
HT-5101081	38	20 x 1.5	760
HT-5101083	50	22 x 2.5	1,200
HT-5101085	50	22 x 1.5	1,200
HT-5101087	50	24 x 3.0	1,200
HT-5101089	50	24 x 1.5	1,200



*** การลู่ลูกต๋ำปกลม SKS เกลียวทลู่ ควรคว่ำด๋ำนทลู่มีเบอร์ และโลโก้ลู่ เพื่อให้ลู่คล่ายลู่ลู่ลู่ ออกมำได้ อย่างมีประลู่ทธิภำ ***

ลูกต๋ำปกลม SKS เกลียวทลู่ (POT) W

รหัสสินค๋ำ	วง (MM)	ขนาด	ลู่ก / ปท
HT-5102003	25	W 1/8"	500
HT-5102004	25	W 5/32"	500
HT-5102005	25	W 3/16"	500
HT-5102007	25	W 1/4"	500
HT-5102008	25	W 5/16"	500
HT-5102009	25	W 3/8"	500
HT-5102023	38	W 3/8"	760
HT-5102010	38	W 7/16"	760
HT-5102011	38	W 1/2"	760
HT-5102012	38	W 9/16"	760
HT-5102013	38	W 5/8"	760
HT-5102014	38	W 3/4"	760
HT-5102016	50	W 7/8"	1,200
HT-5102018	50	W 1"	1,200